

## 40 Chelmsford Way MELTON WEST VIC

3 2 2

Situated on a large 618m<sup>2</sup> (approx.), this stunning home has been meticulously cared for by its current owners, making it the perfect opportunity to move straight in. Located in a highly sought after pocket in Melton West close by to all levels of schooling, childcare and preschool centres, parks, freeway access, and only a short walk to Woodgrove Shopping Centre, the positioning of this home is hard to beat.

The manicured front garden is beautifully complimented by the neat and tidy exterior of this home which includes a lock up carport and large front porch.

Walking through the front door you are met with the generously sized master bedroom featuring a walk-in robe and stunning semi-ensuite. The large living area is adjacent to the master and provides ample space for the family and

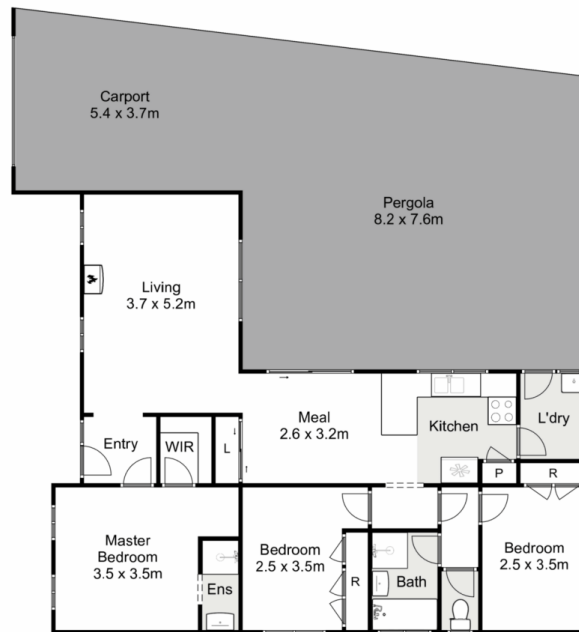
**Price** : \$ 515,000  
**Land Size** : 618 sqm  
**View** : <https://www.ypa.com.au/7974698>



**Ryan Anders**  
**0434 900 300**



**Britteny Cooke**  
**0426 211 338**



## 40 Chelmsford Way, Melton West

ypa

Whilst every attempt has been made to ensure the accuracy of the floor plan contained here, measurements of doors, windows, rooms and any other items are approximate and no responsibility is taken for any error, omission, or mis-statement. This plan is for illustrative purposes only and should be used as such by any prospective purchaser. The services, systems and appliances shown have not been tested and no guarantee as to their operability or efficiency can be given.

