



5 Pendower Way Werribee VIC

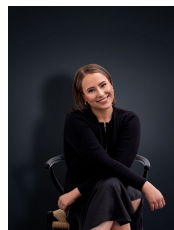
3  2  1 

Discover the perfect blend of style and functionality in this brand new three-bedroom townhouse located in the heart of Werribee. Boasting a prime position close to the vibrant CBD and within a comfortable commute to Melbourne, this residence is an epitome of contemporary suburban living, offering the ideal setting for families, professionals, and anyone in between.

Price : \$500 pw

View : <https://www.ypa.com.au/7974582>

Why You'll Love This Home



Ali Dowling
0450 778 972

