



2 St Cloud Place Pakenham VIC

4 2 2

Welcome to your dream home at 2 St Cloud Place, Pakenham VIC 3810. This exquisite property offers a perfect blend of modern living, convenience, and comfort, now enhanced with state-of-the-art solar panels.

Situated in a highly sought-after location, this property boasts an array of features that cater to every aspect of comfortable living. Upon entering, you are greeted by a spacious interior designed for modern lifestyles. Four generously sized bedrooms provide ample accommodation for families of any size, ensuring everyone has their own private space.

The two well-appointed bathrooms add convenience to busy mornings. The heart of the home is the open-planned living area seamlessly integrating the kitchen, featuring sleek stone benchtops, with the living area. This layout is

Price : \$ 748,000
Building Size : 154 sqm
Land Size : 470 sqm
View : <https://www.ypa.com.au/7972921>

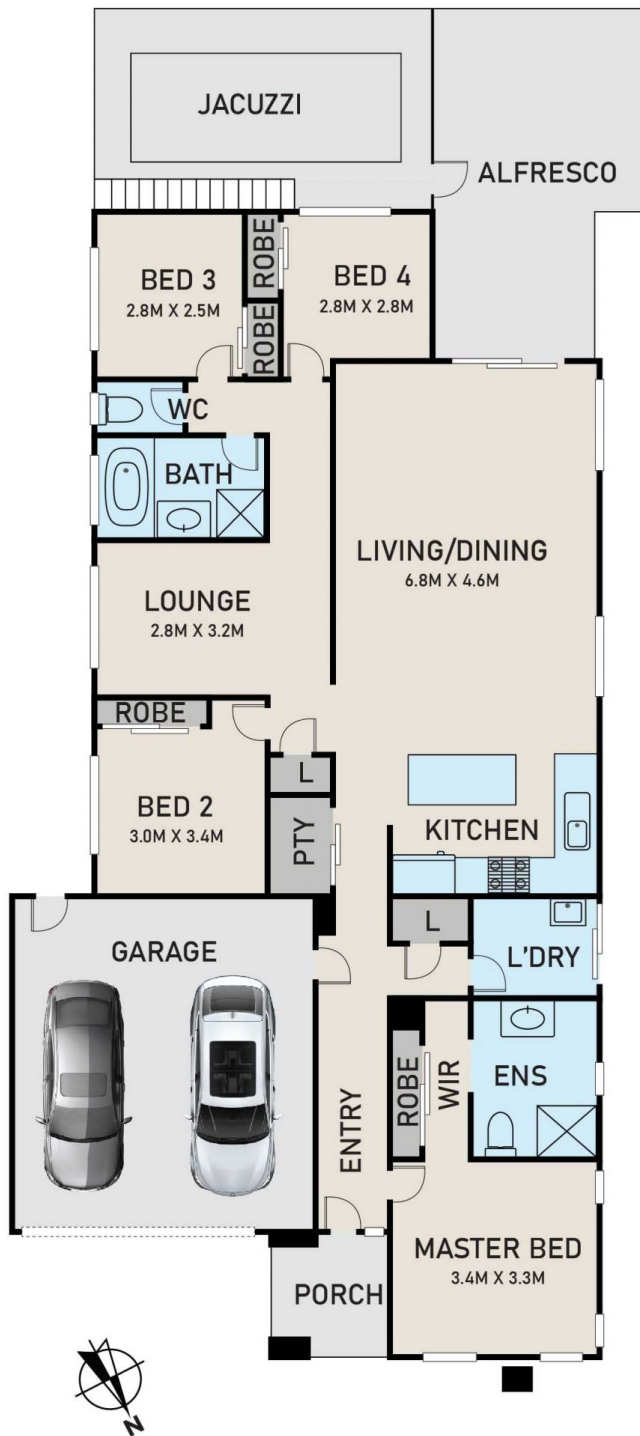


Frances Cutri
0423 485 688

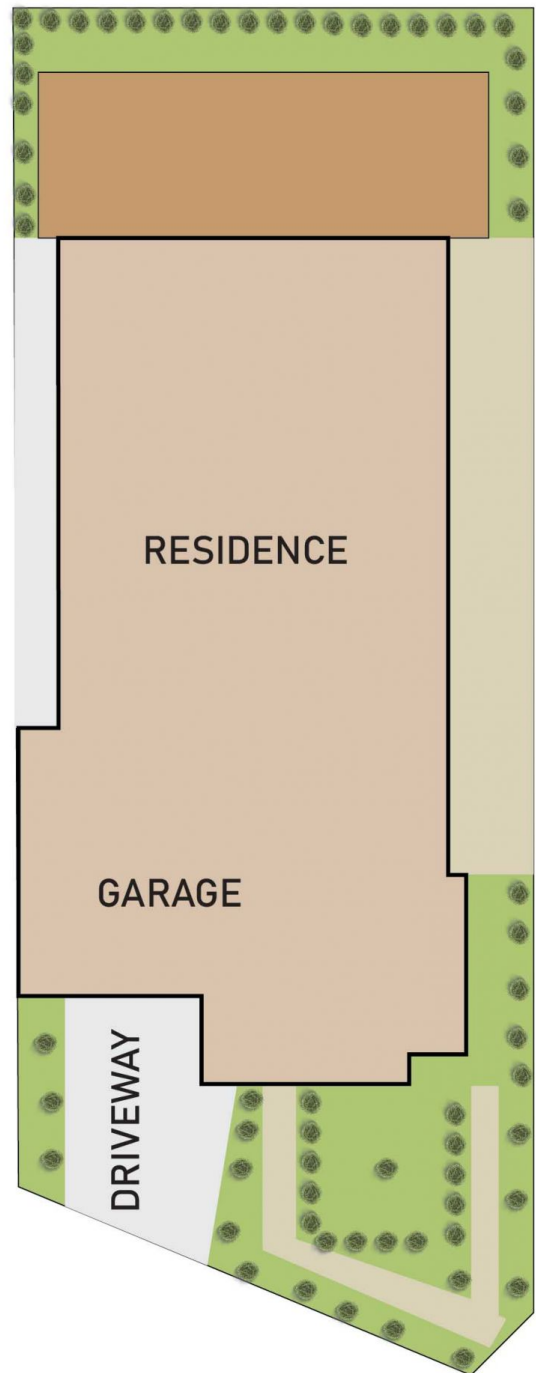


Jayne Rosevear
0438 580 780

FLOOR PLAN



SITE PLAN



2 ST CLOUD PLACE, PAKENHAM

* DIMENSIONS ARE APPROXIMATE AND FOR ILLUSTRATIVE PURPOSES ONLY

ypa