



11 Otterham Way Werribee VIC

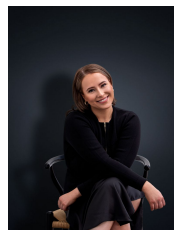
3  2  2 

Immerse yourself in the elegance of lakeside living with this brand new three-bedroom townhouse in the vibrant Harpley Estate. Perfectly positioned just 3.5km from Werribee's bustling CBD and within easy reach of Melbourne, this contemporary residence combines the tranquillity of a lakeside neighbourhood with the convenience of city living.

Price : \$490 pw

View : <https://www.ypa.com.au/7972804>

Why You'll Love This Home



Ali Dowling
0450 778 972