



18 Ivy Court Werribee VIC

5 3 2

Welcome to your dream home in the prestigious Kings Leigh Estate, Werribee. This stunning double-story residence boasts elegance, comfort, and ample space for the entire family. With five bedrooms, three bathrooms, and three expansive living areas sprawled across a generous 876m² of land, this property offers the epitome of luxurious living in a quiet court location.

As you step inside, you're greeted by a grand foyer that sets the tone for the rest of the home. The ground floor features multiple living areas, including a spacious formal lounge upon entry, an inviting family room adjoined to the kitchen, and a versatile study or home office space.

The heart of the home lies in the elegant and stunningly upgraded kitchen, equipped with modern appliances, endless cabinetry, and a large island bench. Along with the kitchen is the walk-in pantry and light-filled dining area, ideal for hosting intimate family dinners or large gatherings

Price : \$ 1,225,000
Land Size : 876 sqm
View : <https://www.ypa.com.au/7970566>

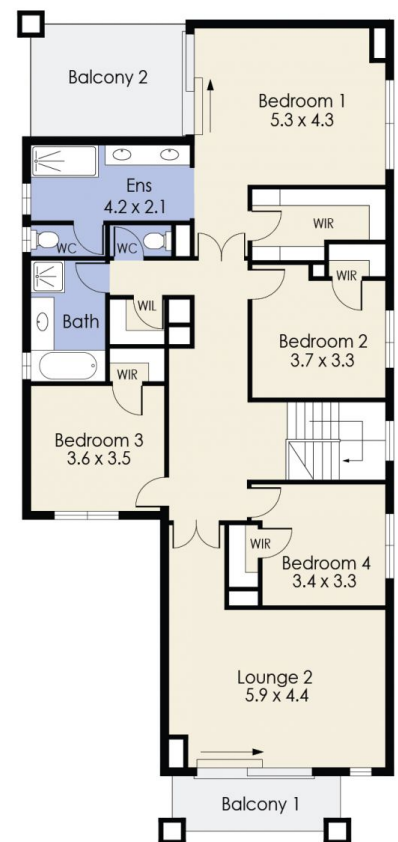


James Christou
0450 733 302



Mitch Smit
0450 913 513

18 Ivy Court, WERRIBEE



Whilst every attempt has been made to ensure the accuracy of the floor plan contained here, measurements of doors, windows, rooms and any other items are approximate and no responsibility is taken for any error, omission, or mis-statement. This plan is for illustrative purposes only and should be used as such by any prospective purchaser. The services, systems and appliances shown have not been tested and no guarantee as to their operability or efficiency can be given.