



17 Patton Lane Hoppers Crossing VIC

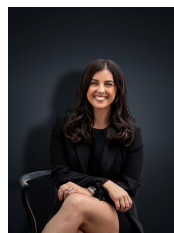
3 2 3

This two storey Victorian style townhouse is about to make your dreams come true! Not often do homes like this, in a location like this become available. Showcasing extraordinary attention to detail throughout and smartly updated, this home is a true testament to style, quality & location.

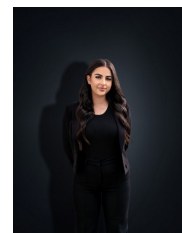
Park facing, this is a perfect home for any young family as well as professional single or couple. Ideally positioned within walking distance to Hoppers Crossing Train Station, a short drive to freeway access & a short drive to reach Pacific Werribee Shopping Centre.

From the picturesque front facade you will find a bluestone entrance showcasing an impeccable leadlight front door, beautiful front garden landscape and all surrounded by the front picket fence. Offering so much inside including:

Price : \$ 655,000
Land Size : 250 sqm
View : <https://www.ypa.com.au/7969086>



Kirsty Cunningham
0414 344 475

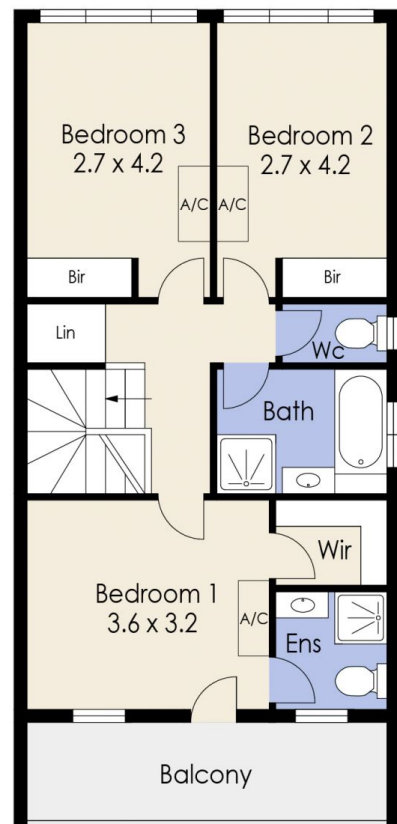


Stefanie Zahra
0406 871 722

17 Patton Lane, HOPPERS CROSSING



Ground Floor



First Floor

Whilst every attempt has been made to ensure the accuracy of the floor plan contained here, measurements of doors, windows, rooms and any other items are approximate and no responsibility is taken for any error, omission, or mis-statement. This plan is for illustrative purposes only and should be used as such by any prospective purchaser. The services, systems and appliances shown have not been tested and no guarantee as to their operability or efficiency can be given.