



## 6 Thomas Street Dromana VIC

6 4 6

Impressively proportioned, this full brick palatial 6-bedroom, 4-bathroom residence with a stunning northerly outlook, is located within a short walk to the Beach & Dromana Shopping Centre, fantastic Restaurants and everything else Dromana has to offer.

**Price** : \$2,495,000  
**Land Size** : 1012 sqm  
**View** : <https://www.ypa.com.au/7968825>

Set on approx. 1012m2 beautiful land in Prime Location this home is Very Special!

### LUXURIOUSLY APPOINTED FITTINGS

? Kitchen with Stone Bench Tops, Walk-in Pantry, Top Quality Appliances & Large Breakfast Bar

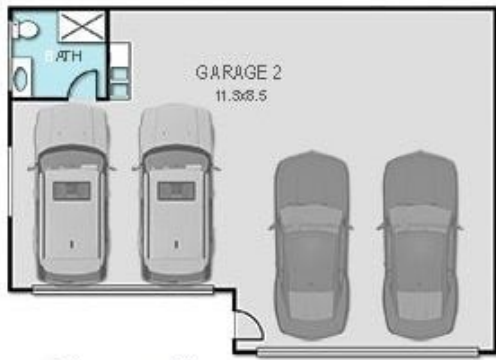
? Master Bedroom on the top floor with Ensuite / Double Vanity / Walk-in Shower



**Elke Remscheid**  
0423 211 315



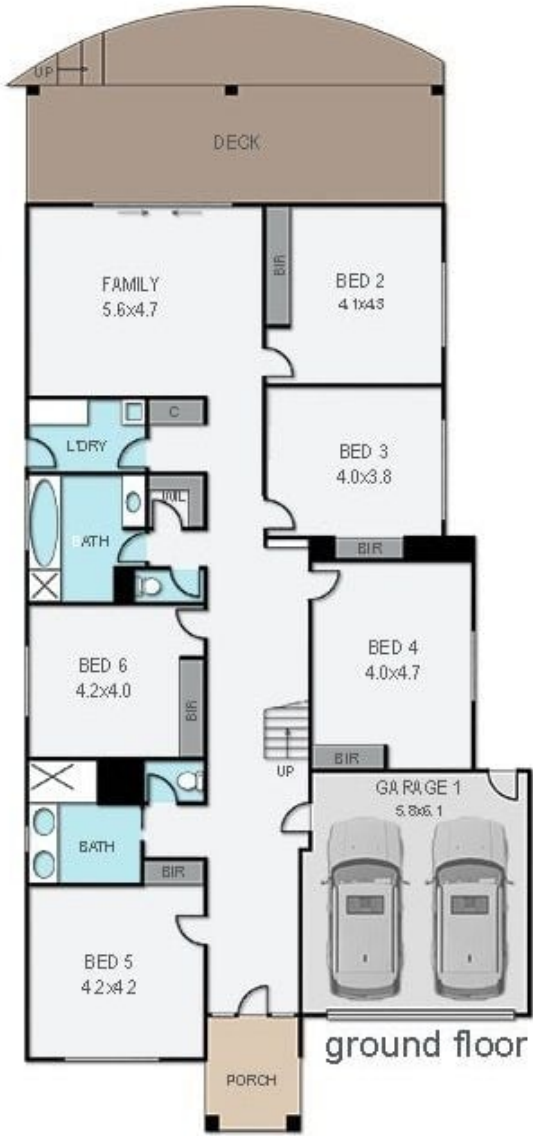
**Ryan Oswald**  
0402 720 822



not in position



siteplan



ground floor



first floor

**Areas (approx):**

Residence:	380m <sup>2</sup>
Garage 1:	35m <sup>2</sup>
Garage 2:	95m <sup>2</sup>
Balconies:	46m <sup>2</sup>
Alfresco:	28m <sup>2</sup>
Porch:	7m <sup>2</sup>
<b>Total:</b>	<b>91m<sup>2</sup></b>
	63.6 squares

## 6 Thomas Street, Dromana

Whilst every attempt has been made to ensure the accuracy of the floor plan contained here, measurements of doors, windows, rooms and any other item are approximate and no responsibility is taken for any error, omission, or misstatement. This plan is for illustrative purposes only and should only be used as such by any prospective purchaser.