

21 Skipton Street Kurunjang VIC

4 2 2

This stunning family home is positioned in the Thoroughbred Park Estate in Kurunjang on a generous 679m² (approx.) parcel of land, nearby to local parklands, schools, public transport, and shops. This amazing home is finished to the highest quality & standards whilst showcasing the outdoor living fit for every entertainer.

The master bedroom which is great in size is accompanied by a large walk-in robe and a wonderful ensuite featuring double vanity and ample bench and cupboard space. The remaining three bedrooms both feature built in robes and are serviced by the bright stunning central bathroom which also boasts double vanity and plenty of storage space as well as a separate powder room.

The heart of this fantastic home consists of the bright kitchen, which features ample bench and cupboard space,

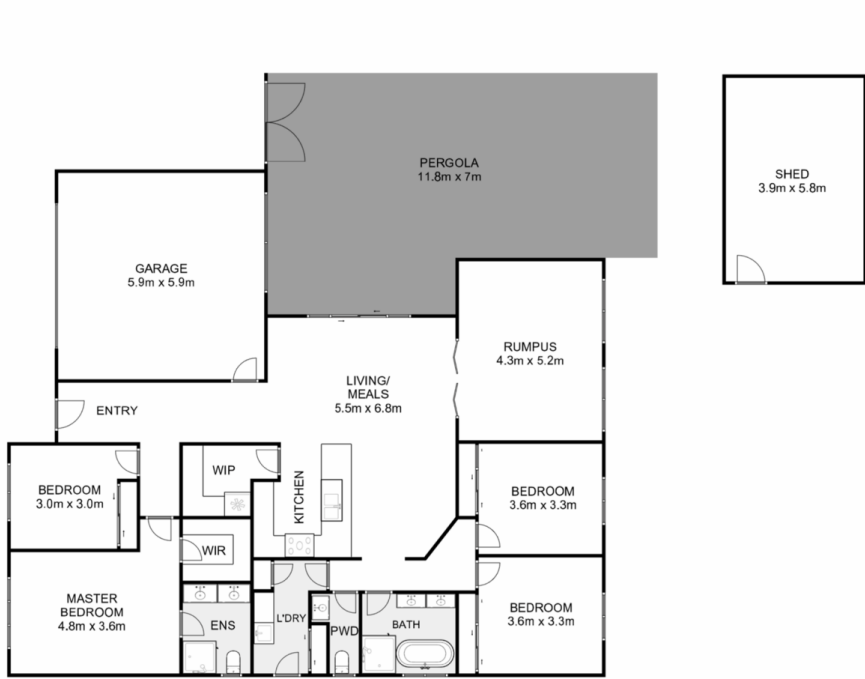
Price : UNDER CONTRACT TEAM YPA
Land Size : 679 sqm
View : <https://www.ypa.com.au/7966209>



Shane Spiteri
0488 980 115



Ricky Frew
0402 007 100



21 Skipton Street, Kurunjang

Ypa

Whilst every attempt has been made to ensure the accuracy of the floor plan contained here, measurements of doors, windows, rooms and any other items are approximate and no responsibility is taken for any error, omission, or mis-statement. This plan is for illustrative purposes only and should be used as such by any prospective purchaser. The services, systems and appliances shown have not been tested and no guarantee as to their operability or efficiency can be given.

