



182 Hopetoun Park Road HOPETOUN PARK VIC

5 🏠 2 🚗 5 🚗

The original homestead in the exclusive Hopetoun Park area and set on a generous corner allotment of just over 3 acres (12,200m² approx.) is a family home that effortlessly combines Australian Colonial style with modern substance. Upon entering the tree lined driveway you will find an idyllic bush setting for this impressive home.

Designed and built approximately over a 100 years ago, while being renovated in the last 5 years the homestead boasts an incredible combination of modern living and original charm.

Upon entry you will immediately take notice of the high ceilings, floorboards, pendant lighting, upgraded corning, upgraded skirting boards, traditional fireplaces and original upgrades that continue throughout.

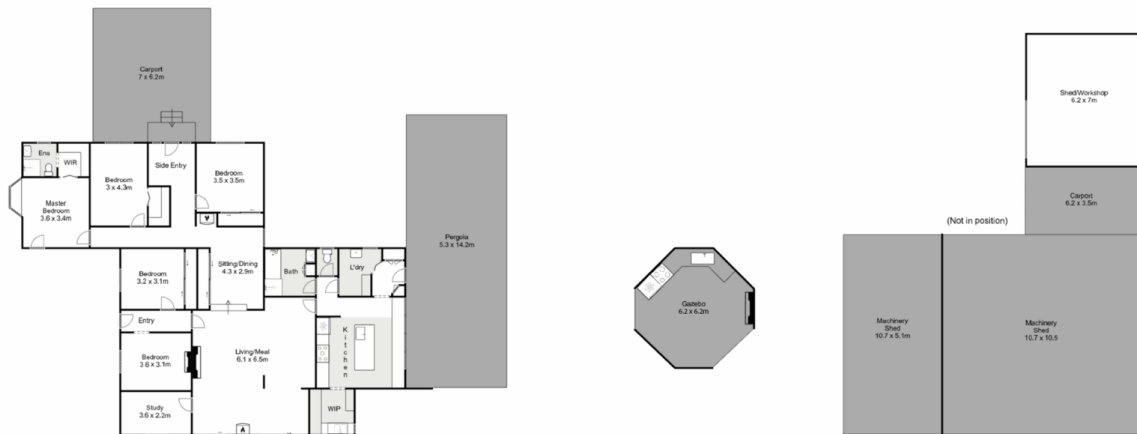
Price : \$1,400,000 - \$1,500,000
Land Size : 12200 sqm
View : <https://www.ypa.com.au/7965814>



Ryan Anders
0434 900 300



Shane Spiteri
0488 980 115



182 Hopetoun Park Road, Hopetoun Park

YPA

Whilst every attempt has been made to ensure the accuracy of the floor plan contained here, measurements of doors, windows, rooms and any other items are approximate and no responsibility is taken for any error, omission, or mis-statement. This plan is for illustrative purposes only and should be used as such by any prospective purchaser. The services, systems and appliances shown have not been tested and no guarantee as to their operability or efficiency can be given.

