



## 8 Broomfield Avenue Sunbury VIC

4 2 2

Welcome to the desirable Brookhaven Estate which is nestled in an amenity enriched part of Sunbury. This immaculately presented property sitting on a generous 588m<sup>2</sup> (approx) block exudes warmth and modernity, offering a haven tailored to your every need.

As you step inside, you are greeted by a spacious and inviting interior adorned with neutral tones and contemporary finishes. The floor plan seamlessly blends functionality with comfort, catering to the diverse needs of modern living.

The heart of the home is the large open-plan kitchen, seamlessly connected to the dining area, providing ample space for family gatherings and entertaining. Boasting a sizable walk-in pantry, a gas cooktop, an electric oven, and a dishwasher, this kitchen is equipped for the keen chef!

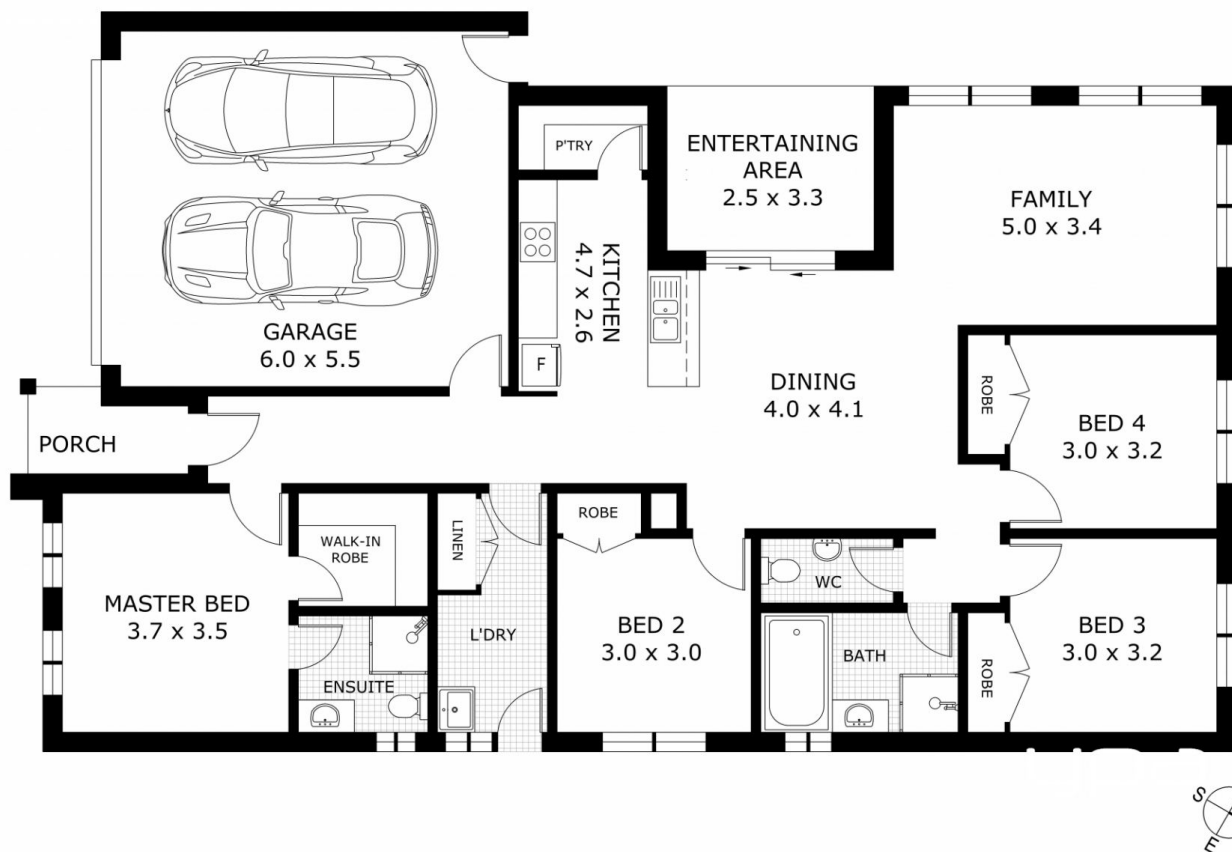
**Price** : \$ 622,000  
**Land Size** : 588 sqm  
**View** : <https://www.ypa.com.au/7965546>



**Lisa Totaro**  
**0410 144 215**



**Cassandra Doria**  
**0497 972 028**



Disclaimer: All images, views and diagrams are indicative only. Dimensions, areas and landscape are indicative and subject to change without notice.  
Purchasers should check the plans and specifications included in the terms of the contract of sale carefully prior to signing the contract.