



## 15 Saltia Dr Doreen VIC

3 2 1

Nestled in the tranquil embrace of Merredin Park at one end and scenic walking trails at the other, this exceptional home offers an idyllic lifestyle in a prime location. Situated on a peaceful no-through road, this immaculate residence boasts a perfect blend of modern comfort and serene surroundings.

Step inside to discover a spacious open-plan living area, seamlessly flowing from the stylish stainless-steel kitchen to a delightful alfresco zone enveloped in elegant cafe curtains, promising year-round enjoyment. Every room offers a picturesque garden view, creating a serene ambiance throughout.

The master suite, complete with an ensuite and walk-in robe, provides a luxurious retreat, while two additional bedrooms and a well-appointed family bathroom are

**Price** : \$ 605,000

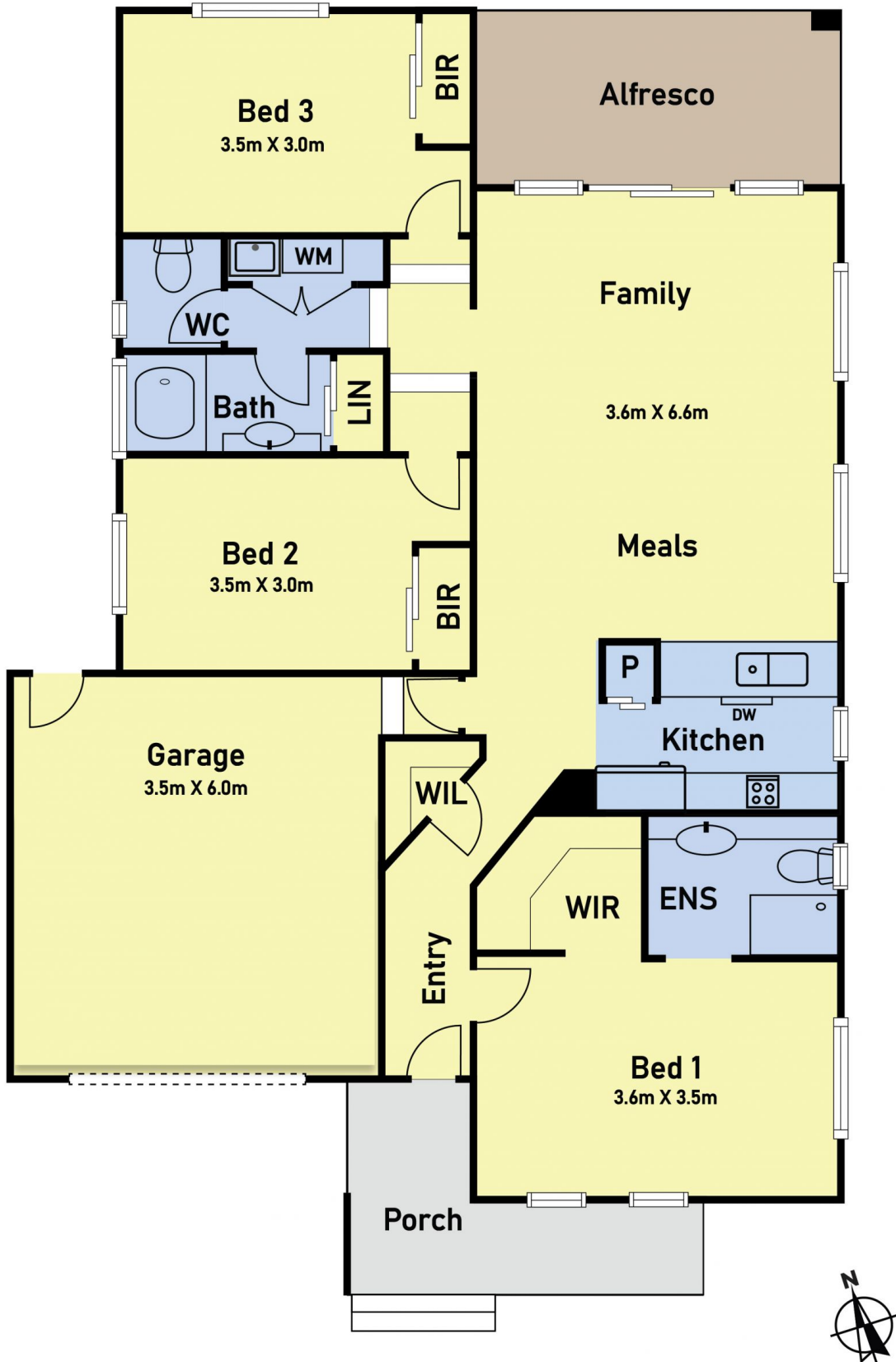
**View** : <https://www.ypa.com.au/7965540>



**Manu Kumar**  
0435 456 004



**Carla Primiano**  
0407 183 331



NOTE: SIZE AND DIMENSIONS ARE INDICATIVE AND SHOULD NOT BE TAKEN AS DEFINITE.