



6B Tangelo Terrace Werribee VIC

3 2 1

Situated in the ever so popular Orchard Park Estate, one of central Werribee's most sought after locations is this neat and tidy 3 bedroom home. Walking distance to Werribee Railway Station, Werribee main street, restaurants, cafes, supermarkets, schools and easy freeway access. This property is sure to attract first home buyers, downsizers and investors alike. Offering the next lucky owner.

Price : \$ 532,000
Land Size : 298 sqm
View : <https://www.ypa.com.au/7965072>

- ? Three bedrooms all with robes
- ? Master bedroom with walk in robe and ensuite
- ? Central bathroom with separate toilet
- ? Large modern open plan kitchen, meals and living arrangement
- ? Spacious kitchen with stone bench tops, stainless steel appliances and walk in pantry
- ? Single remote garage with internal access
- ? Fantastic outdoor entertaining area

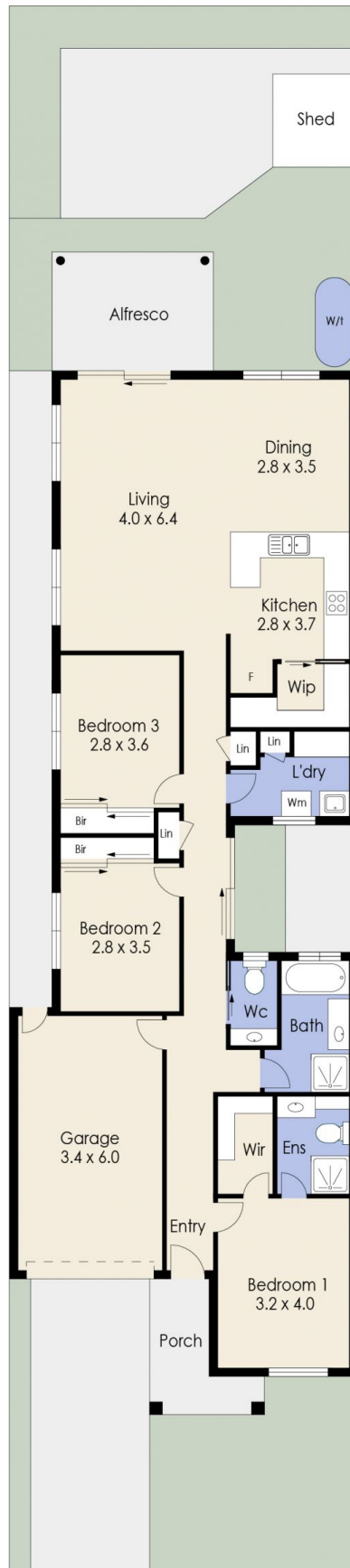


Mitch Smit
 0450 913 513



James Christou
 0450 733 302

6B Tanglelo Terrace, WERRIBEE



Whilst every attempt has been made to ensure the accuracy of the floor plan contained here, measurements of doors, windows, rooms and any other items are approximate and no responsibility is taken for any error, omission, or mis-statement. This plan is for illustrative purposes only and should be used as such by any prospective purchaser. The services, systems and appliances shown have not been tested and no guarantee as to their operability or efficiency can be given.