



11B Advent Road Werribee VIC

3 3 2

Sophisticated in design and detail, this stunning townhouse in the prestigious Riverwalk Estate showcases three generous bedrooms all with WIR plus a study nook, 2 with ensuites, 3 bathrooms and 4 toilets.

Meticulously designed and delivered with a comprehensive list of inclusions, this spacious home offers high ceilings, stone benches, walk in pantry, heating and cooling and multiple living areas with an open kitchen, living and dining area downstairs and a spacious lounge/rumpus upstairs.

This home boasts a perfect mix of grandeur, quality and style with a location that assures tranquility and future growth.

11B Advent Road epitomises the best that Werribee has to offer with Werribee CBD only a short drive away along with

Price : \$595,000 to \$650,000
Building Size : 222 sqm
Land Size : 285 sqm
View : <https://www.ypa.com.au/7964774>



James Antonio
0401 889 248

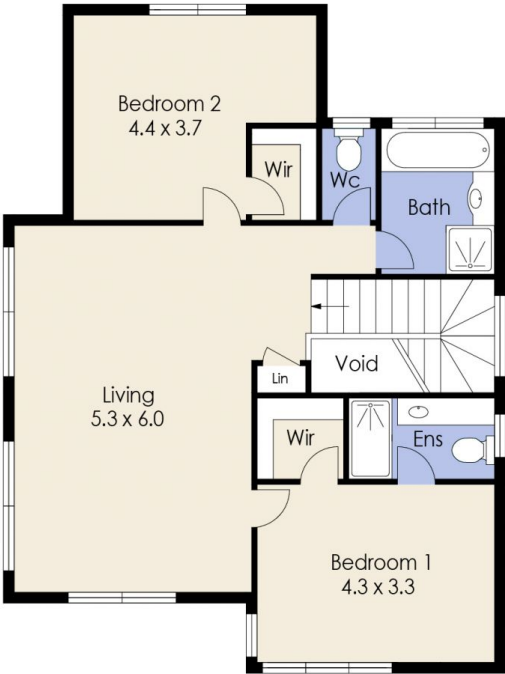


Dane Bouch
0499 655 382

11B Advent Avenue, WERRIBEE



Ground Floor



First Floor

Whilst every attempt has been made to ensure the accuracy of the floor plan contained here, measurements of doors, windows, rooms and any other items are approximate and no responsibility is taken for any error, omission, or mis-statement. This plan is for illustrative purposes only and should be used as such by any prospective purchaser. The services, systems and appliances shown have not been tested and no guarantee as to their operability or efficiency can be given.