

## 15 Ravenhill Boulevard ROXBURGH PARK VIC

4 2 2

If you're looking for the perfect family home that is situated in the suburbs most sought after location, your wait is over!

Nestle opposite the serene Shank Land Reserve Lake, this property offers a truly special retreat for those seeking both tranquility and modern comfort. Boasting a generous corner block spanning approximately 460 sqm approx. This residence is tailor made for the growing family.

Step inside to discover four spacious bedrooms, each featuring built-in robes, while the master treats you with ensuite and balcony- the perfect spot to savour your morning coffee while taking in the views.

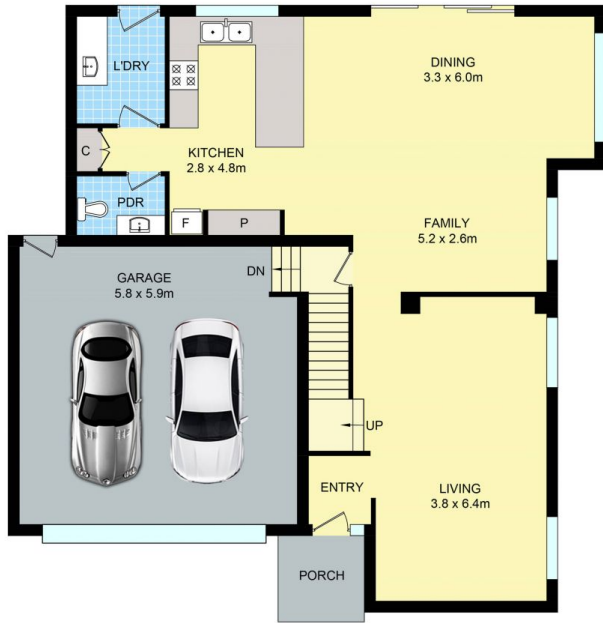
Entertaining is effortless with two separate living areas providing ample space for gatherings. The updated kitchen is a chef's delight, equipped with sleek stonetop benches

**Price** : \$ 685,000

**View** : <https://www.ypa.com.au/7964705>



**Alexander Sherriff**  
0438 212 714



GROUND FLOOR



FIRST FLOOR

**Floor Plan: 15 Ravenhill Blvd, Roxburgh Park**

Disclaimer: Floor plan is for marketing purposes and is to be used as a guide only. Measurements are approximate and for illustrative purposes. Interested parties should make and rely on their own enquiries or refer to contract drawings for more accurate information.