



1/20 Harmony Drive Tarneit VIC

3 2 1

Displaying an impressive blend of captivating modern features, this home makes for a sensational low maintenance domain, whether it be a first home, downsize or an investment. Located across from a parkland with a playground and is within close proximity to all levels of schooling, Werribee River walking tracks and parkways, New Tarneit shopping complexes and Pacific Werribee Shopping Precinct, the location of this home is highly sought after.

Upon entry you are greeted by beautiful fresh paint, brand new carpets and 9ft ceilings. Located off the hallway are three generously sized bedrooms featuring built in robes with the master bedroom featuring a walk-in robe and a modern ensuite. The remaining bedrooms have a courtyard between and are serviced by the central bathroom with separate powder room toilet.

Price : \$ 508,000

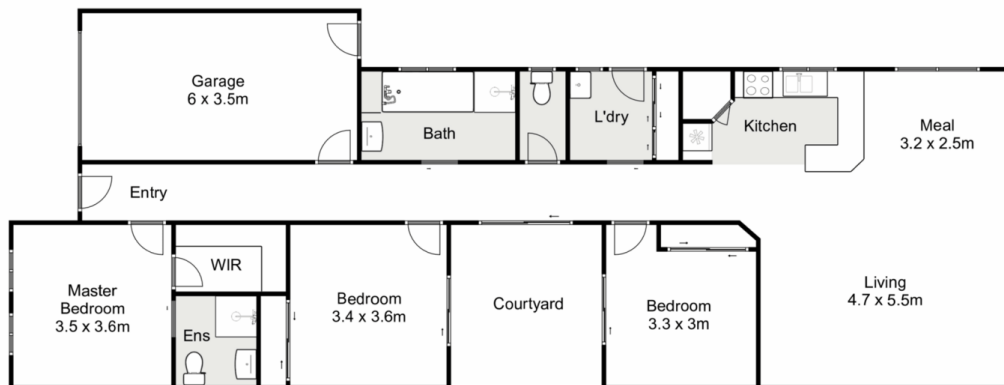
View : <https://www.ypa.com.au/7962635>



Ryan Anders
0434 900 300



Shane Spiteri
0488 980 115



1/20 Harmony Drive, Tarneit

ypa

Whilst every attempt has been made to ensure the accuracy of the floor plan contained here, measurements of doors, windows, rooms and any other items are approximate and no responsibility is taken for any error, omission, or mis-statement. This plan is for illustrative purposes only and should be used as such by any prospective purchaser. The services, systems and appliances shown have not been tested and no guarantee as to their operability or efficiency can be given.

