



11 Stem Street KURUNJANG VIC

4  2  2 

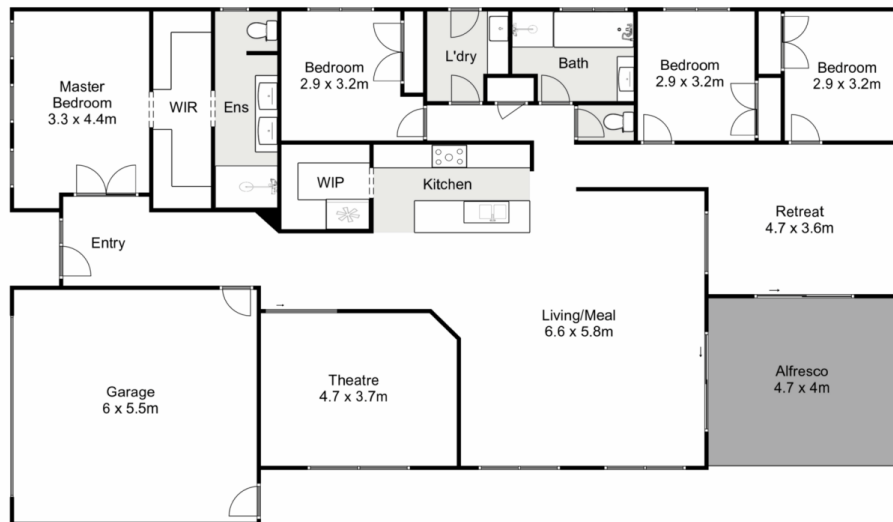
Displaying an impressive blend of captivating modern features and contemporary style, this property is also located in close proximity to everything Kurunjang has to offer including Kurunjang Primary/Secondary School, Macpherson Park, parks, walking tracks and the brand new Melton Christian College Toolern Vale Campus. This gorgeous home offers glamorous ambience throughout in combination with the finest and latest upgrades making this exquisite home true value for your money.

Situated at the front of the home is the outstanding master bedroom that comes complete with quality plantation shutters, a large walk in robe and a full ensuite further complimented by an oversized shower, floor to ceiling tiles, separate toilet and double vanity to comfortably accommodate any couple.

Price : \$ 645,000
Land Size : 448 sqm
View : <https://www.ypa.com.au/7959358>



Shane Spiteri
0488 980 115



11 Stem Street, Kurunjang

Ypa

Whilst every attempt has been made to ensure the accuracy of the floor plan contained here, measurements of doors, windows, rooms and any other items are approximate and no responsibility is taken for any error, omission, or mis-statement. This plan is for illustrative purposes only and should be used as such by any prospective purchaser. The services, systems and appliances shown have not been tested and no guarantee as to their operability or efficiency can be given.

