



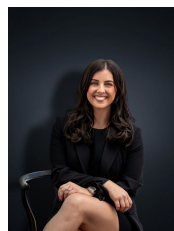
**14 East Gate Way Wyndham Vale VIC**

3 1 8

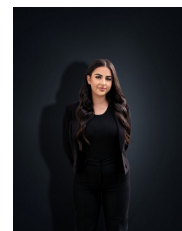
An opportunity presents here for a young family, first home buyers or even those looking to add to their investment portfolio! On a spacious allotment (Approx. 536 sq m) you are located within walking distance to local shops, public transport, child care centres, parks & Iramoo Primary School. Within a short drive in either direction you will reach Manor Lakes Train Station & Shopping Centre and just as easily you will reach Werribee CBD & Train Station. With so much on offer here this incredible opportunity is sure to be snapped up quick. The home offers:

- ? Three spacious bedrooms
- ? Large formal lounge upon entry
- ? Kitchen / meals area with updated appliances and dishwasher
- ? Walk in pantry / Laundry
- ? Updated central bathroom

**Price** : \$ 520,000  
**Land Size** : 536 sqm  
**View** : <https://www.ypa.com.au/7958244>



**Kirsty Cunningham**  
**0414 344 475**



**Stefanie Zahra**  
**0406 871 722**

# 14 East Gateway, Wyndham Vale



Whilst every attempt has been made to ensure the accuracy of the floor plan contained here, measurements of doors, windows, rooms and any other items are approximate and no responsibility is taken for any error, omission, or mis-statement. This plan is for illustrative purposes only and should be used as such by any prospective purchaser. The services, systems and appliances shown have not been tested and no guarantee as to their operability or efficiency can be given.