



21 Kettlewell Drive Lara VIC

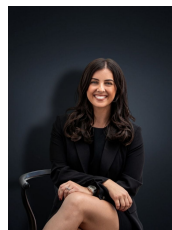
A spacious allotment of approximately 544 sq m in a thriving estate positioning you centrally to Lara's most important amenities.

In an up and coming location with sold out stages, you are minutes to Lara main town and close by to Geelong CBD also. With convenience in mind, the train station is easily accessible and likewise the freeway to reach both Melbourne & Geelong CBD's.

With Lara offering so many facilities including:

- ? You Yangs Regional Park
- ? Lara sporting club
- ? Lara Golf club
- ? Lara Swimming Pool
- ? Lara Primary School
- ? Lara Lake Primary School

Price : \$410,000 - \$440,000
Land Size : 544 sqm
View : <https://www.ypa.com.au/7958112>



Kirsty Cunningham
0414 344 475



Kiarah Bagnato
0449 941 895