



1/1-3 Noordenne Avenue Seaholme VIC

3  2  2 

This pristine residence nestled in the highly coveted Seaholme, crafted by Stonehedge Homes, boasts a prime location amidst low-maintenance landscaped gardens, this residence is a perfect blend of style and convenience.

A meticulously designed home capitalising on the breath-taking views of Cherry Lake, evident from the open-plan living area that seamlessly integrates a spacious living room, a well-equipped kitchen with an oven, a dining area, family room, 2 balconies and a convenient powder room. The interior exudes modern elegance, featuring brand new carpets and a fresh coat of paint throughout.

The lower level showcases the master bedroom, complete with a walk-in robe (WIR) and en-suite, while two additional bedrooms with built-in robes (BIRs) share a central family bathroom and laundry. Upstairs, the charm of timber floors

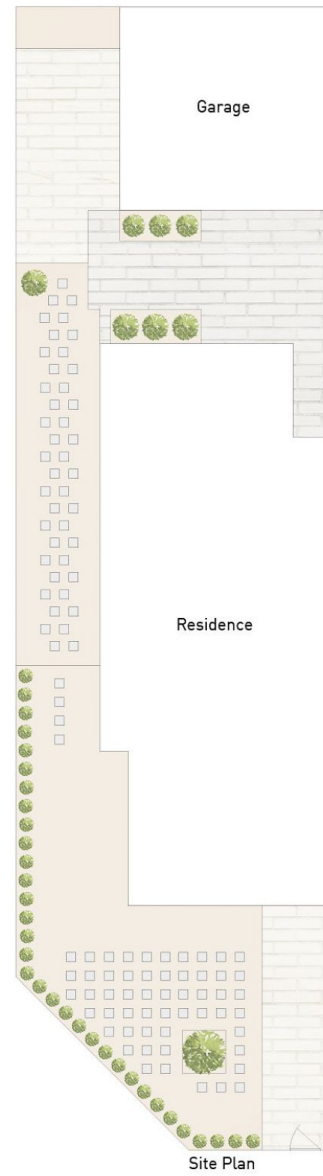
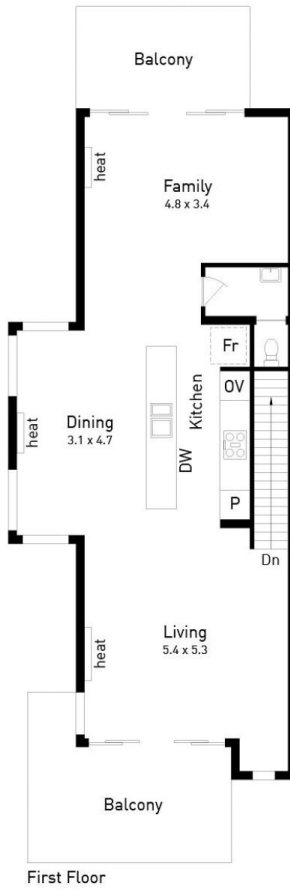
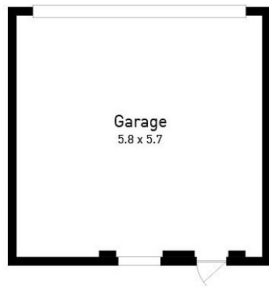
View : <https://www.ypa.com.au/7954591>



Bassam Tofaili
0477 972 229



Kristen Thompson
0459 972 229



Total Internal Area 171m² | Balconies 33m² ← N

1/1-3 Noordenne Avenue, Seaholme

3 2 2

Disclaimer: Please note this floor plan is for marketing purposes and is to be used as a guide only. This floor plan is intended to give a general indication of the layout only. Any statements of distance, size or area are approximate and for indicative purposes only.