



**301/19-25 Nott Street Port Melbourne VIC**

2 🛏 2 🚿 1 🚗

Experience coastal luxury living with this stunning modern apartment located in the heart of Port Melbourne. Situated mere moments away from the iconic Station Pier, Bay Street Cafes and restaurants, and the pristine Port Melbourne beach. This property offers unparalleled convenience and lifestyle opportunities.

**Price** : \$1,250,000 - \$1,350,000  
**View** : <https://www.ypa.com.au/7954567>

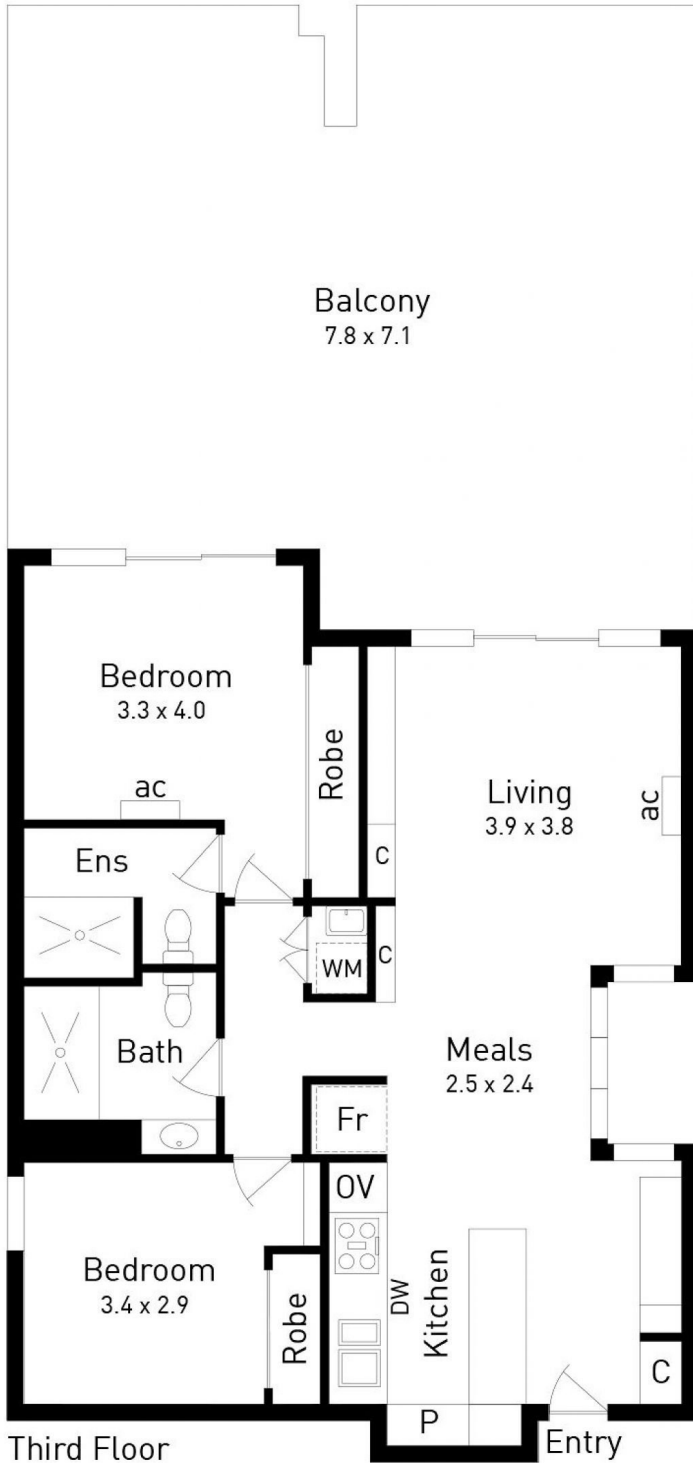
Upon entrance, you are instantly greeted by a spacious and light-filled living area which is seamlessly connected to an enormous private terrace, ideal for entertaining guests or simply soaking in the sea breeze. The reverse cycle heating/cooling split systems in every room ensures year-round comfort, while electric blinds provide effortless control over natural light. The kitchen features sleek black stone benchtops, mirrored splashbacks, and an abundance of storage featuring soft close cabinetry. Miele appliances including; gas cooktop, oven, coffee machine, microwave



**Bassam Tofaili**  
0477 972 229



**Kristen Thompson**  
0459 972 229



Secured  
Under Ground  
Car Space

(Not in Position)

Total Internal Area 73m<sup>2</sup> | Balcony 52m<sup>2</sup>



301/19-25 Nott St, Port Melbourne



Disclaimer: Please note this floor plan is for marketing purposes and is to be used as a guide only. This floor plan is intended to give a general indication of the layout only. Any statements of distance, size or area are approximate and for indicative purposes only.