

8 Flax Court Werribee VIC

3  1 

Whether you are looking for your first home or next blue-chip investment this unique location offers an exceptional opportunity backing onto the Werribee River.

This solid 3-bedroom family home boast big living spaces, polished timber floors, a well-maintained kitchen and bathroom and great sized backyard.

Nestled in a tranquil court setting, enjoy easy access to Watton Street and the abundant walking tracks and bike trails tracing along the Werribee River's edge.

On just over 450m2 there are endorsed plans and permits stamped for two spacious 19sq townhouses for those looking to capitalise on the location and either build now or in years to come.

Price : \$500,000 - \$550,000
Building Size : 121 sqm
Land Size : 454 sqm
View : <https://www.ypa.com.au/7954129>

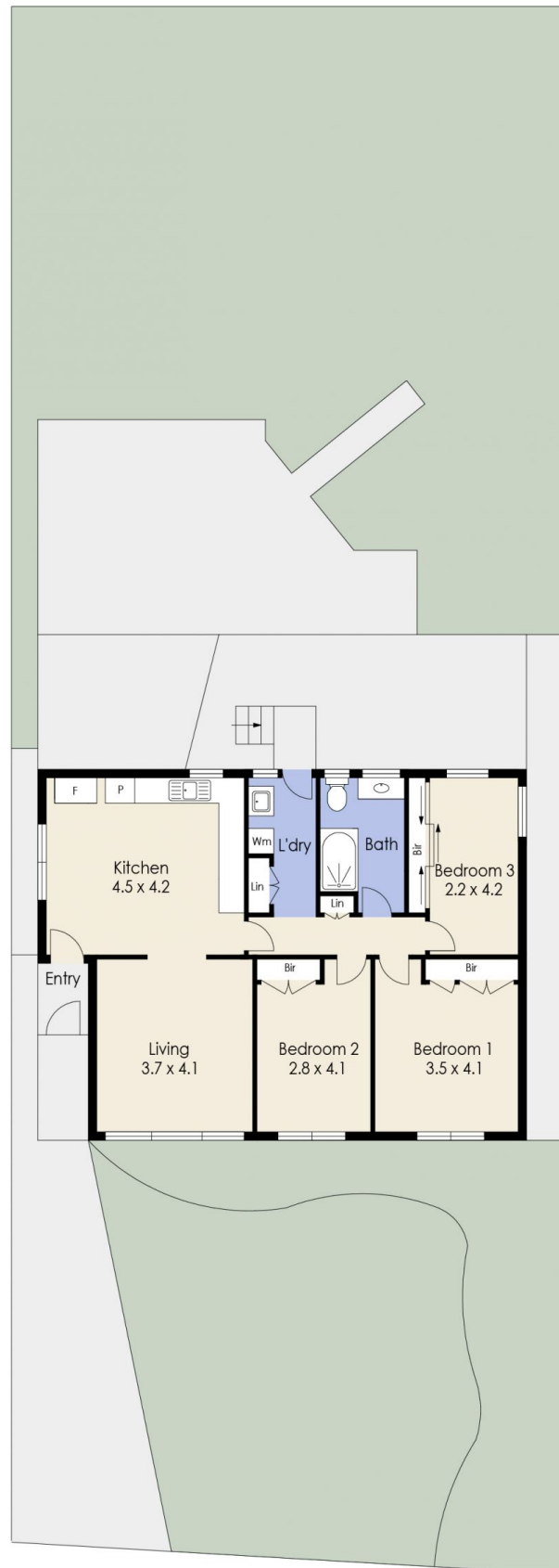


James Antonio
0401 889 248



Dane Bouch
0499655382

8 Flax Court, WERRIBEE



Whilst every attempt has been made to ensure the accuracy of the floor plan contained here, measurements of doors, windows, rooms and any other items are approximate and no responsibility is taken for any error, omission, or mis-statement. This plan is for illustrative purposes only and should be used as such by any prospective purchaser. The services, systems and appliances shown have not been tested and no guarantee as to their operability or efficiency can be given.