



15 Powlett Drive Clyde VIC

4 2 2

This charming residence stands out with its meticulously maintained garden and architecturally appealing exterior, offering an immediate sense of warmth and welcome. Nestled in the highly desirable Eliston Estate, known for its quality homes and community atmosphere, this property is truly special.

Inside, the home features four bedrooms, providing ample space for a growing family or guests. The master bedroom is particularly impressive, with its spacious layout, ensuite bathroom, and walk-in robe offering a private retreat within the home. Additionally, there's a dedicated theatre room, perfect for enjoying movies with family and friends.

The living areas are spacious and well-designed, with distinct zones for relaxation and entertainment. The modern kitchen is a standout feature, equipped with

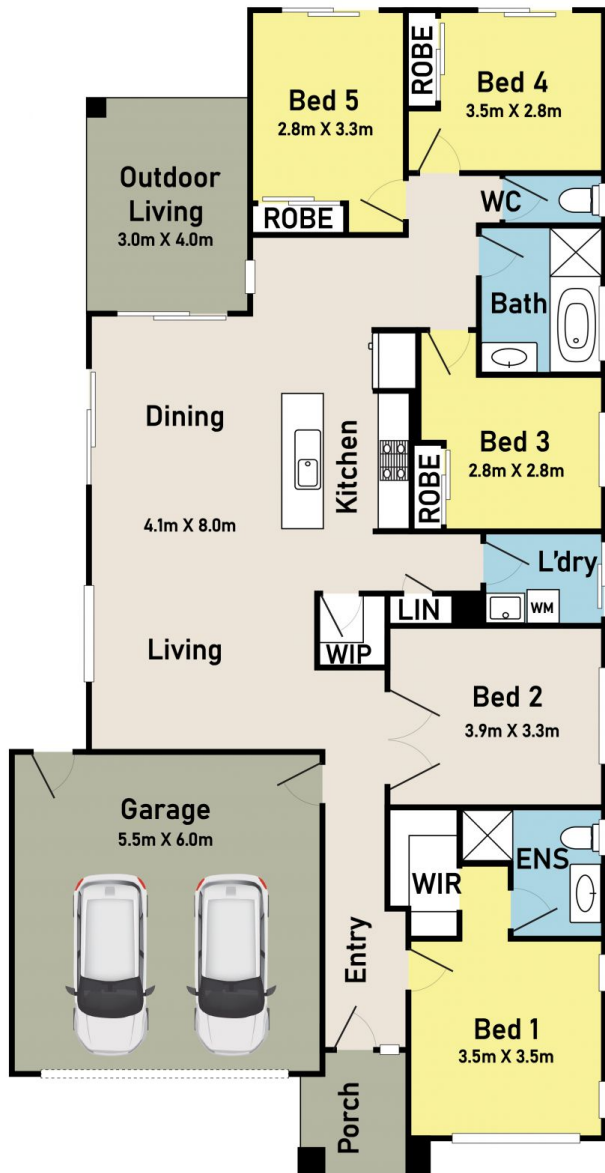
Price : \$749,000-\$799,000

View : <https://www.ypa.com.au/7953964>

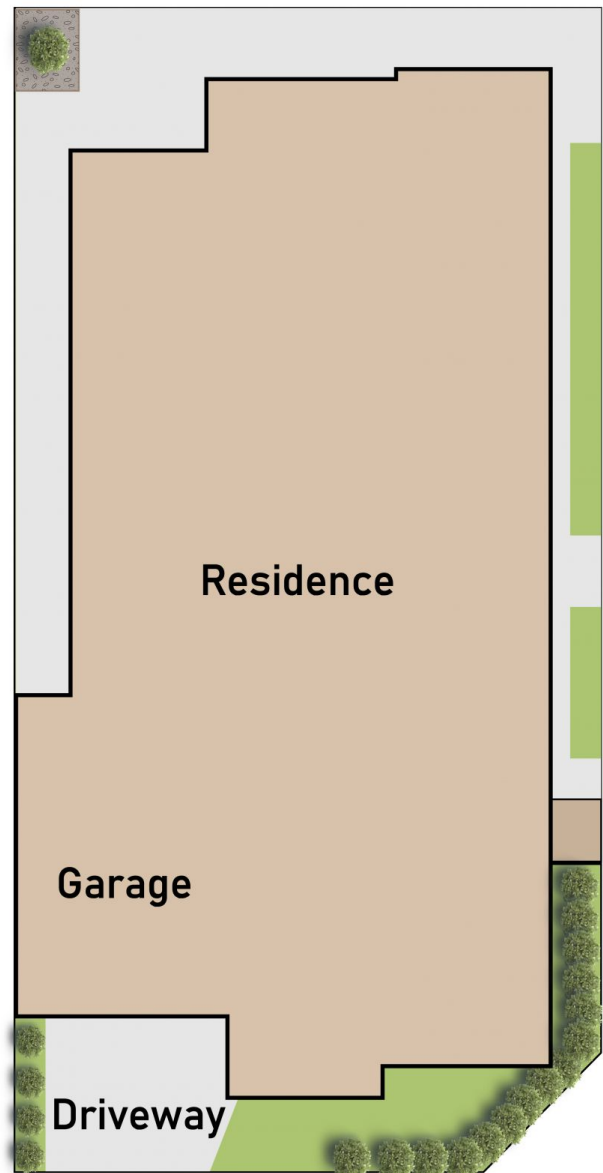


Kamaljeet Singh
0433 619 387

Floor Plan



Site Plan



15 Powlett Drive, Clyde

* Dimensions are approximate and for illustrative purposes only

ypa