



5 The Terrace MELTON VIC

5 3 2

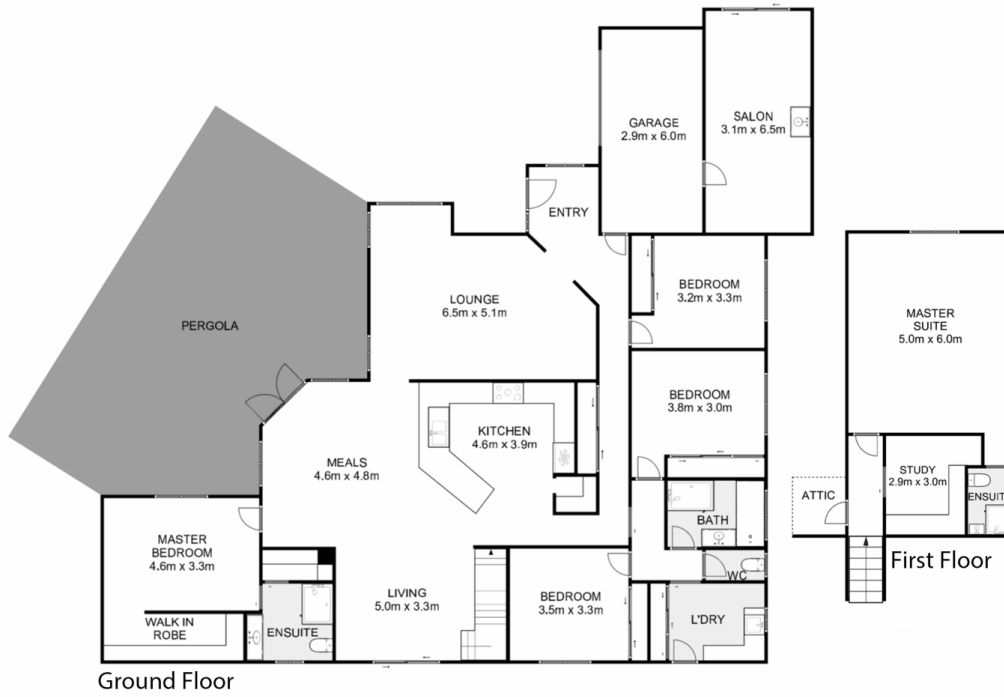
Immaculately presented and nestled in a quiet court in the exclusive Darlingsford estate of Melton, with only ever having one owner it's not often a home of this calibre and quality comes to the market. Situated in a convenient pocket close by to all amenities including schools of all levels, local shopping complexes, recreational reserves, Melton botanical gardens, sporting facilities, public transport, freeway access and so much more.

The street appeal of this home is second to none. The grand front façade invites you into the home where you immediately take notice of the quality and admirable features of this beautiful home including soaring high ceilings, hardwood timber floors and upgraded cornices. The front living zone is the perfect family area providing an amazing space for all to enjoy. Continuing through the huge kitchen showcases the highest of quality finishes with

Price : \$769,000 - \$799,000
Land Size : 540 sqm
View : <https://www.ypa.com.au/7953795>



Kate McGlone
0401 853 244



Ground Floor

First Floor

5 The Terrace, Melton



Whilst every attempt has been made to ensure the accuracy of the floor plan contained here, measurements of doors, windows, rooms and any other items are approximate and no responsibility is taken for any error, omission, or mis-statement. This plan is for illustrative purposes only and should be used as such by any prospective purchaser. The services, systems and appliances shown have not been tested and no guarantee as to their operability or efficiency can be given.

