

13 Grapeview Grove Sunbury VIC

4  2  2 

What a wonderful world that awaits you and your family! We bring you a home located in the picture perfect Rolling Meadows Estate. This gorgeous sand stone beauty is in mint condition and has views that will make you feel warm and fuzzy inside. Positioned well on a corner allotment of 1252m² approximately of land this property will truly make you feel right at home. Behind a country style facade and its wrap around veranda you will immediately feel the quality of this home as soon as you enter with its polished timber boards, tall ceilings and decorative touches right through.

It quickly becomes apparent that the workmanship in this home was second to none. This home is complete with 4 bedrooms, the huge master bedroom includes a large walk in robe and a full ensuite. Adjoining the master bedroom is a parents retreat/living space as well as a 4th bedroom with

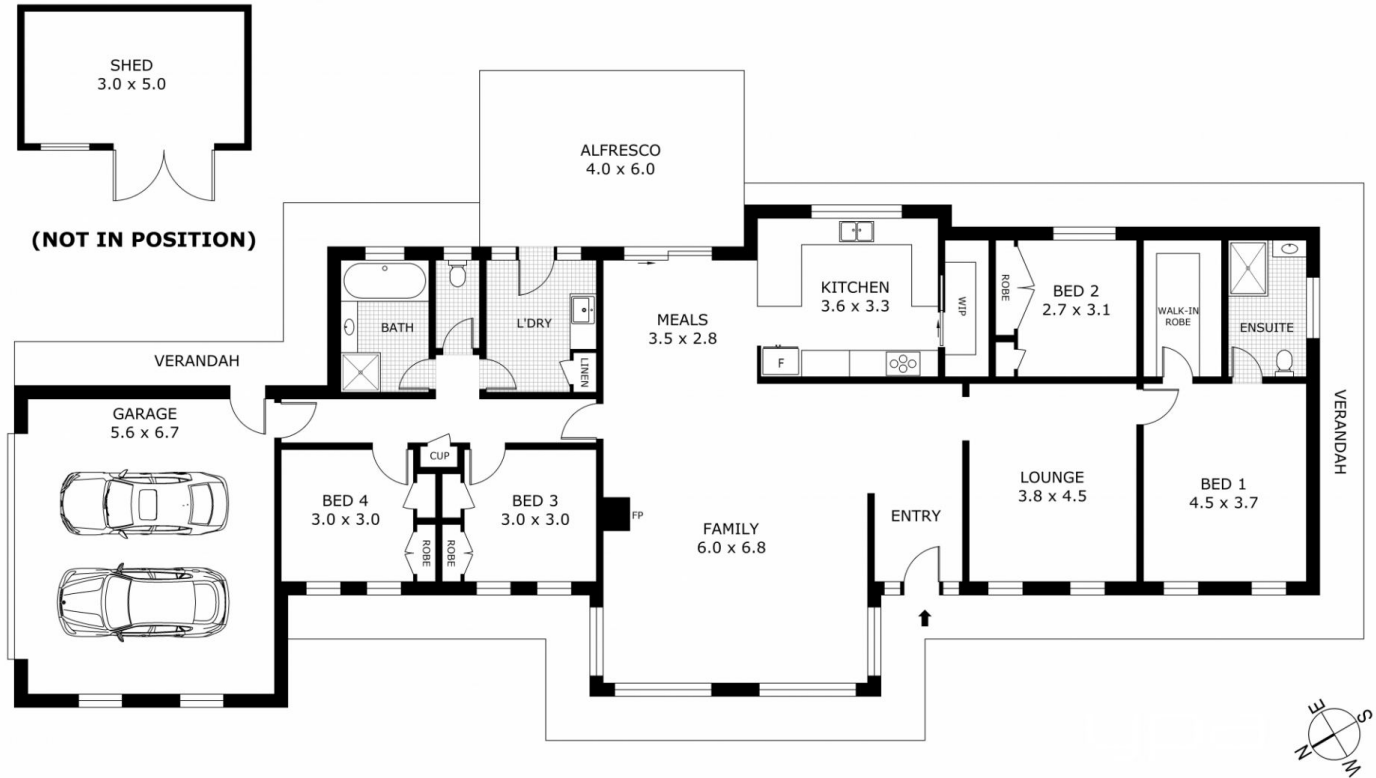
Price : \$ 1,100,000
Land Size : 1252 sqm
View : <https://www.ypa.com.au/7952494>



Lisa Totaro
0410 144 215



Cassandra Doria
0497 972 028



Disclaimer: All images, views and diagrams are indicative only. Dimensions, areas and landscape are indicative and subject to change without notice. Purchasers should check the plans and specifications included in the terms of the contract of sale carefully prior to signing the contract.