

## 35 Clement Way MELTON SOUTH VIC

4 2 2

Located in the sought-after Maplewood Estate close by to all amenities such as all levels of schooling, Opalia Shopping Centre, Melton South Train Station, parklands, newly opened Coles shopping complex and all upcoming infrastructure in the growth corridor that is forever expanding. With a healthy allotment size of 434m2 (approx.), this home is a great opportunity for a family, first home buyer or investor.

Comprising of four generously sized bedrooms all with built in wardrobes, with the master bedroom located at the rear with it's own split system, an open walk in robe & full ensuite. The home also features a spacious stunning central bathroom.

The living area features an open floor plan which is large in size and has multiple windows that allow plenty of natural

**Price** : \$589,000 - \$619,000

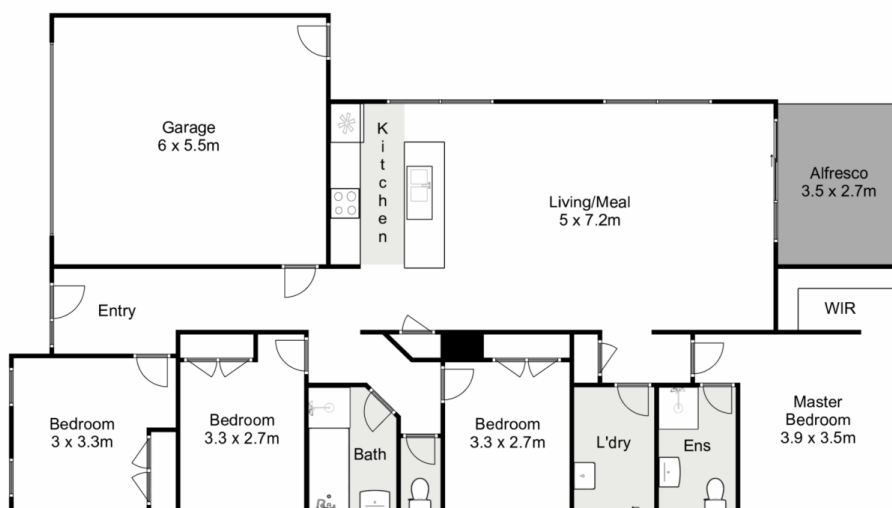
**View** : <https://www.ypa.com.au/7952382>



**Ryan Anders**  
0434 900 300



**Junior MuBashar**  
0450 644 606



## 35 Clement Way, Melton South

Ypa

Whilst every attempt has been made to ensure the accuracy of the floor plan contained here, measurements of doors, windows, rooms and any other items are approximate and no responsibility is taken for any error, omission, or mis-statement. This plan is for illustrative purposes only and should be used as such by any prospective purchaser. The services, systems and appliances shown have not been tested and no guarantee as to their operability or efficiency can be given.

