



110 Overland Dr Doreen VIC

4 2 2

Nestled in the serene embrace of semi-rural bliss, this four-bedroom home offers a perfect blend of convenience and tranquility. Mere minutes from shops, schools, and transport options, this property epitomizes the ideal suburban escape. The master bedroom, adorned with an ensuite, sets the tone for luxury living, while a dedicated study, formal lounge and a generously sized theatre room provide versatile spaces for work and play.

The three internal living space beckons families to unwind, creating a harmonious balance between relaxation and socializing. The surrounding deck, complemented by a pergola, forms an enchanting venue for entertaining guests, while an alfresco dining area and an additional fire pit area neatly nestled in the meticulously landscaped garden completes three external entertainment areas.

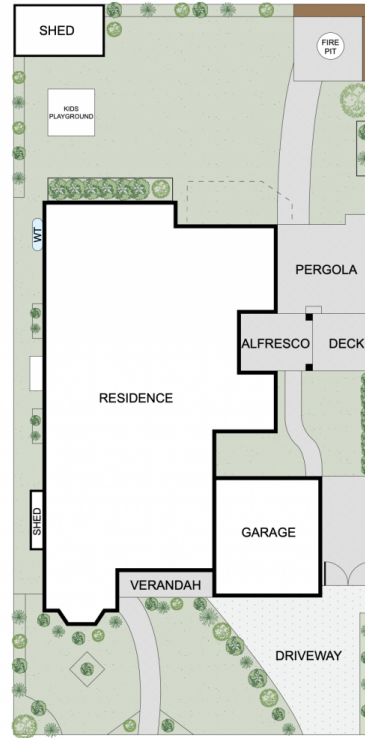
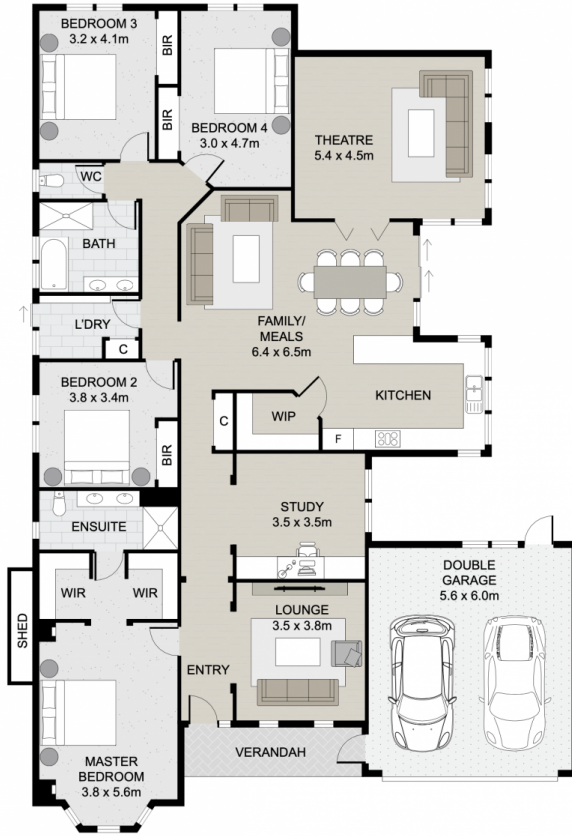
Price : Contact Agent
Land Size : 800 sqm
View : <https://www.ypa.com.au/7952230>



Richard Stockman
0414 482 798



Carla Primiano
0407 183 331



Scale in metres. Indicative only. Dimensions are approximate. All information contained here in is gathered from sources we believe to be reliable. However we cannot guarantee its accuracy and interested persons should rely on their own enquiries.