



2/48 Duncans Road Werribee VIC

3 1 2

There isn't a better location than this! This well-maintained home is positioned within walking distance to the Werribee CBD, Train Station, Local café's and restaurants and plenty of shops. Also, nearby to Parklands, Sporting clubs and a short drive to Werribee's best tourist attractions including the Open Range Zoo, Werribee Mansion Hotel & Spa, Wyndham Harbour and easy freeway access! Offering a fantastic floorplan and situated on approximately 441m² land.

Price : \$ 535,000
Land Size : 441 sqm
View : <https://www.ypa.com.au/7951993>



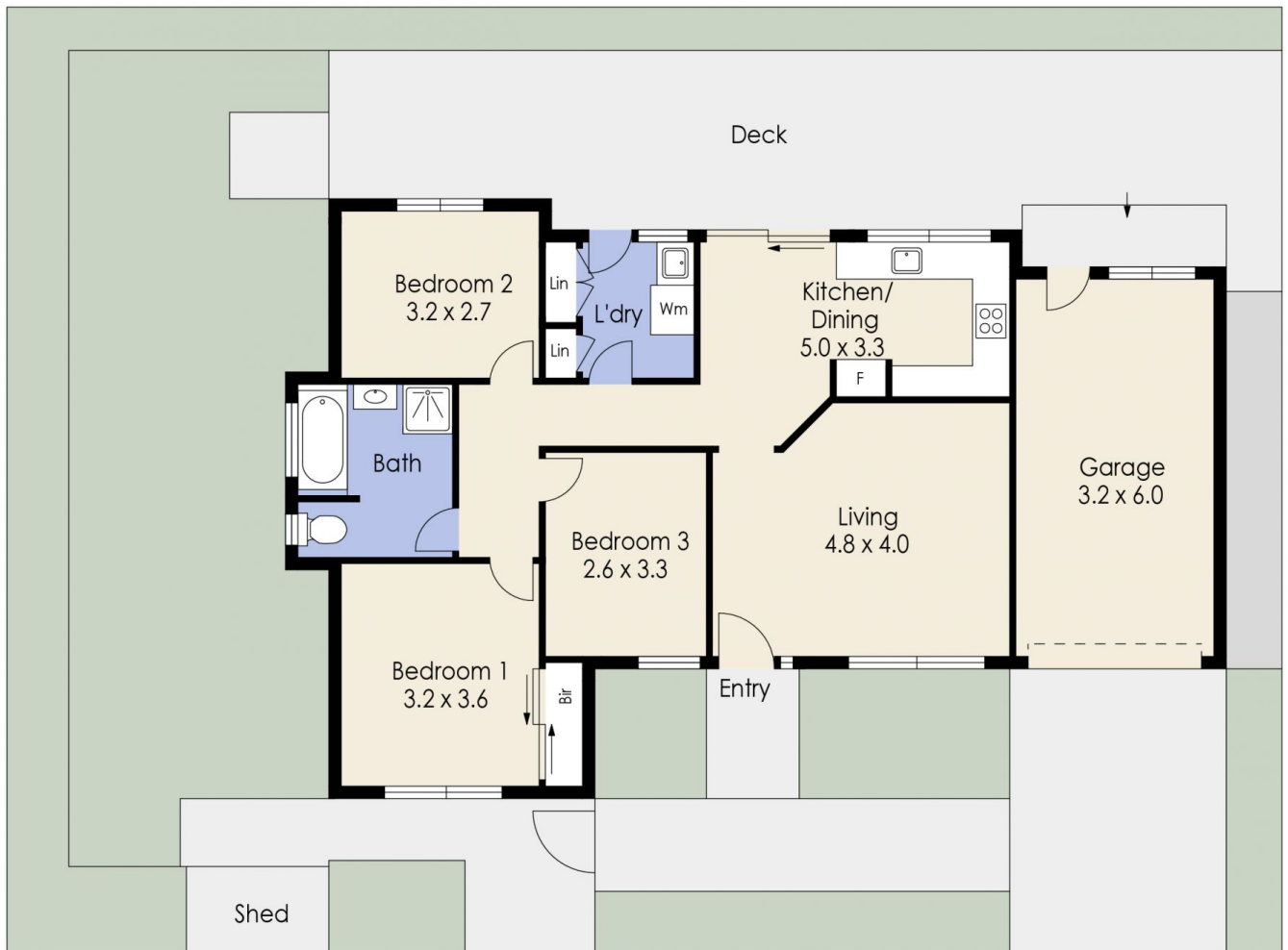
Mitch Smit
0450 913 513



Kiarah Bagnato
0449 941 895

- ? Three bedrooms all with ceiling fans
- ? Central updated bathroom
- ? Spacious living room with split system
- ? Kitchen with stainless steel appliances and meals area with views of the garden
- ? Huge decked outdoor entertaining area
- ? Low maintenance gardens

248 Duncan's Road, WERRIBEE



Whilst every attempt has been made to ensure the accuracy of the floor plan contained here, measurements of doors, windows, rooms and any other items are approximate and no responsibility is taken for any error, omission, or mis-statement. This plan is for illustrative purposes only and should be used as such by any prospective purchaser. The services, systems and appliances shown have not been tested and no guarantee as to their operability or efficiency can be given.