



4 San Remo Drive Werribee VIC

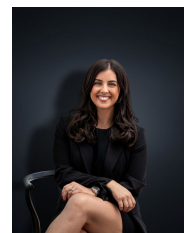
5 4 5

Very rarely does an opportunity like this hit the market. The moment you walk in you will be blown away by the size and fantastic floor plan of this stunning family home. Located in one of the most central sort after pockets of Werribee and only a short drive to Werribee CBD, Restaurants, Cafes and Shops (2.2km approx), this fantastic opportunity sits on a massive allotment of 994m2(approx.) Presenting a great opportunity for homeowners looking for their forever home with the added bonus of the self-contained granny flat at the rear of the property! With Werribee train station only 2km away and local amenities in every direction and a short distance to hospitals, walking/bike tracks, Sims shopping complex, Pacific Werribee approx 2.9km, Werribee river and parklands, this home simply ticks all the boxes. Offering the next lucky owners.

Price : \$ 976,000
Land Size : 994 sqm
View : <https://www.ypa.com.au/7951566>



Mitch Smit
0450 913 513



Kirsty Cunningham
0414 344 475

? Four bedrooms all with built in robes

4 San Remo Drive, WERRIBEE



Whilst every attempt has been made to ensure the accuracy of the floor plan contained here, measurements of doors, windows, rooms and any other items are approximate and no responsibility is taken for any error, omission, or mis-statement. This plan is for illustrative purposes only and should be used as such by any prospective purchaser. The services, systems and appliances shown have not been tested and no guarantee as to their operability or efficiency can be given.