



### 6 Malmsbury Place Caroline Springs VIC

4 2 2

This lovely family home in a sought-after Caroline Springs estate radiates sophistication and easy living. Its open design seamlessly blends contemporary style with practical functionality, offering a lifestyle that effortlessly combines convenience and flair perfect for any astute buyer.

Nestled amidst a diverse array of local amenities, from shops and highly regarded schools to lively restaurants and beautiful parks, this property enjoys a desirable, centrally-located position. Everything you need is within easy reach. Set in a vibrant, opportunity-rich neighbourhood, this home stands out as a beacon of distinction. It has the potential to serve as both a cherished family haven and a savvy investment, capturing the aspirational lifestyle that Caroline Springs is renowned for.

Features Include:

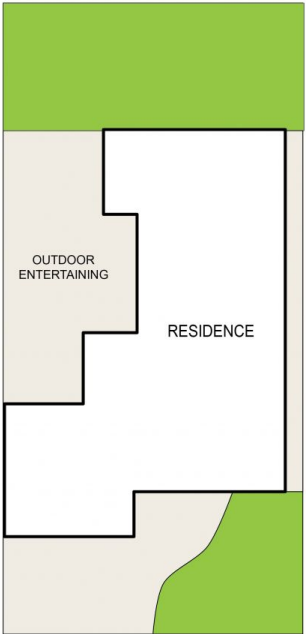
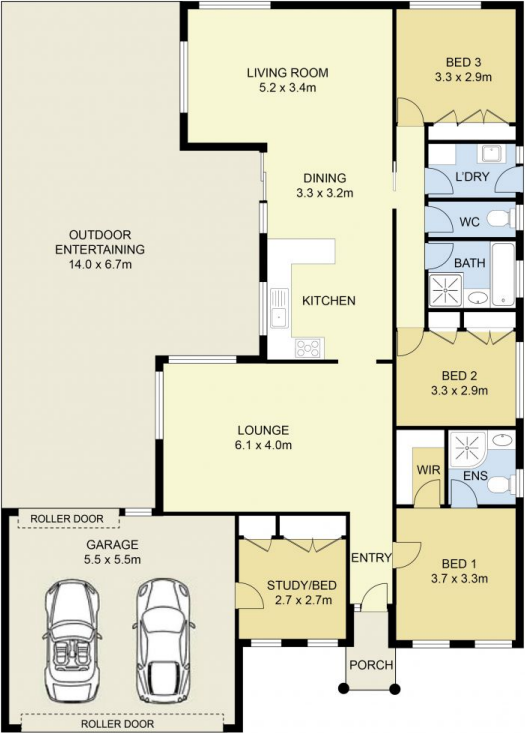
**Price** : PRIVATE SALE | CONTACT AGENT  
**Land Size** : 480 sqm  
**View** : <https://www.ypa.com.au/7949962>



**Stephen Azzopardi**  
0402 012 554



**Andrew Migliorisi**  
0432 526 844



# 6 Malmsbury Place, Caroline Springs

DISCLAIMER : ALL DIMENSIONS ARE AN APPROXIMATION ONLY AND NO GUARANTEE IS GIVEN WITH RESPECT TO ACCURACY.