



2/6 Ozzimo Way Werribee VIC

2 2 1

Styled brilliantly, this unique property offers so much as an entry into the market. Surprising you with a spacious design there are so many advantages to this beautiful home.

Located centrally within a short drive to Werribee CBD, Train Station with café's, shops and everything you could need. A short drive to freeway access and walking distance to Parks and reputable schools. Also equally as quick to Wyndham Vale Train Station and Manor Lakes Central.

- The home offers but is not limited too;
- ? Large open plan Livingroom upon entry
 - ? Open plan kitchen attached to living / meals area
 - ? Quality stainless steel kitchen appliances
 - ? Master bedroom with en-suite and walk in robe
 - ? Secondary bedroom with built in robe

Price : \$ 475,000

View : <https://www.ypa.com.au/7948396>

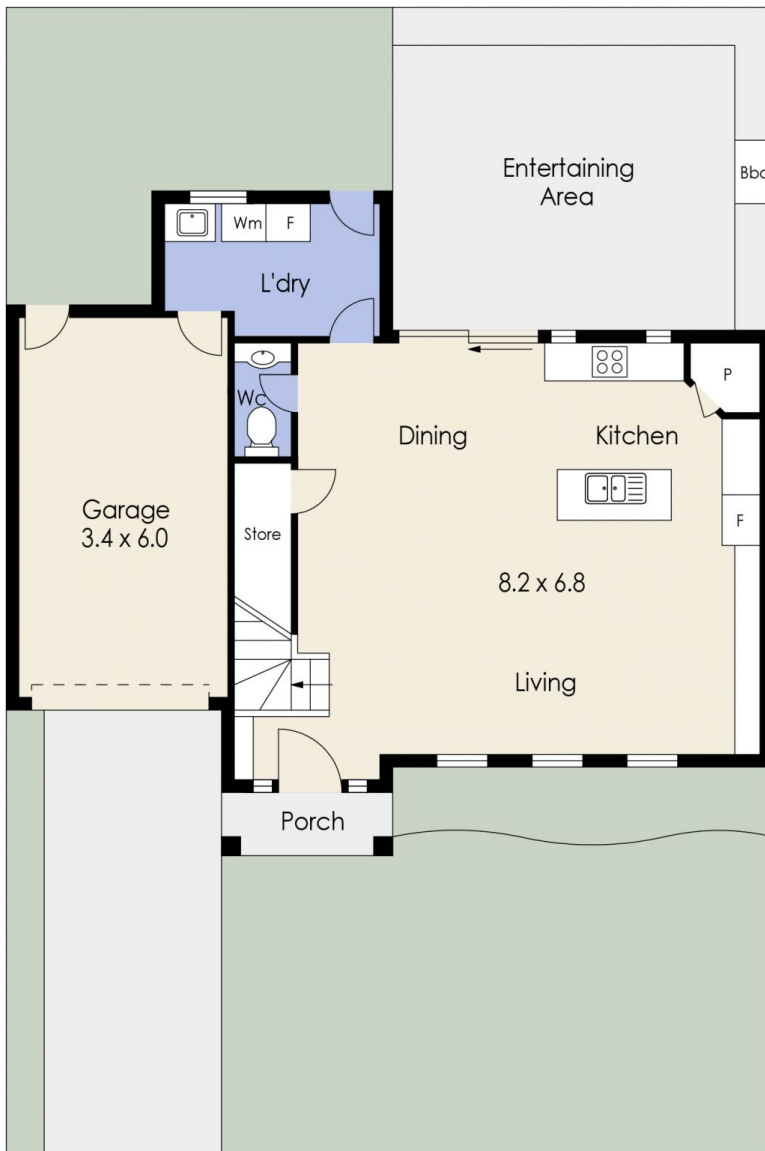


James Christou
0450 733 302

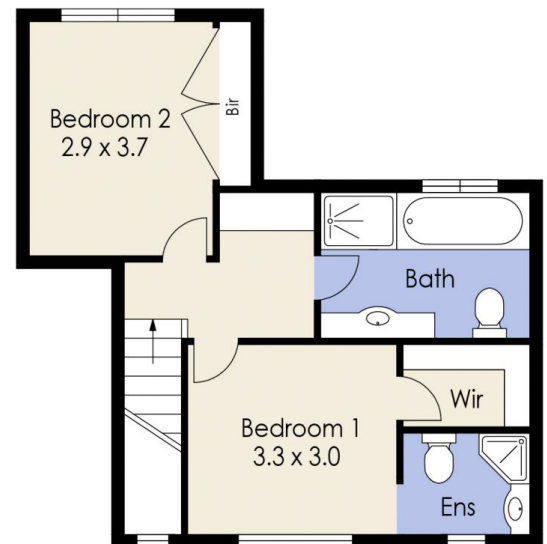


Kirsty Cunningham
0414 344 475

2/6 Ozzimo Way, WERRIBEE



Ground Floor



First Floor

Whilst every attempt has been made to ensure the accuracy of the floor plan contained here, measurements of doors, windows, rooms and any other items are approximate and no responsibility is taken for any error, omission, or mis-statement. This plan is for illustrative purposes only and should be used as such by any prospective purchaser. The services, systems and appliances shown have not been tested and no guarantee as to their operability or efficiency can be given.