



## 50 Aquatic Drive Cranbourne West VIC

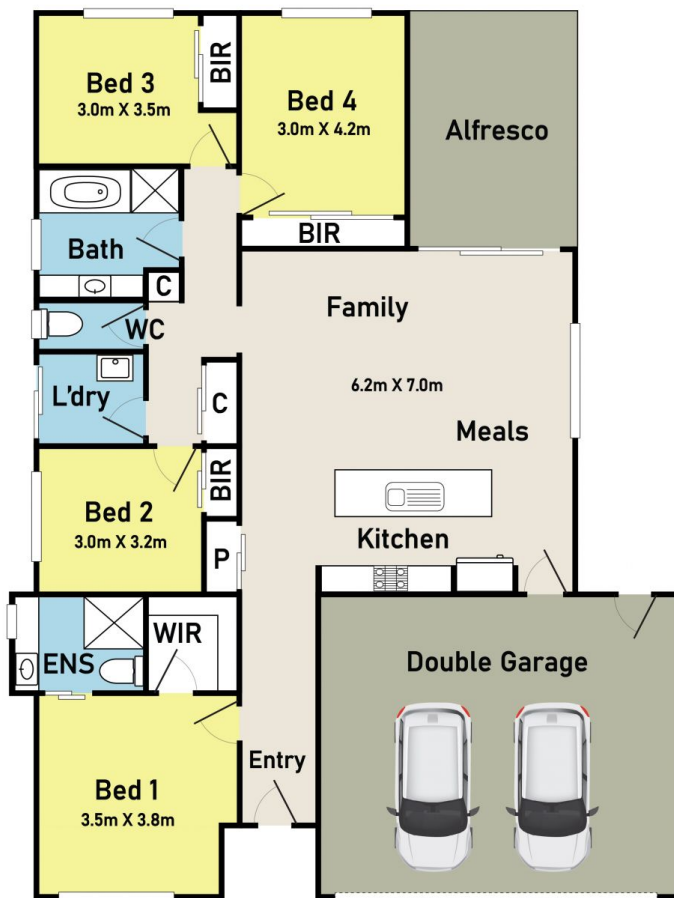
4 2 2

Located in the popular Clarinda Park Estate is this warm and utterly inviting family home that represents an outstanding all-rounder ideal for first home buyers, owner-occupiers, and investors! Set on a 415m<sup>2</sup> block, the home offers 4 generous bedrooms.

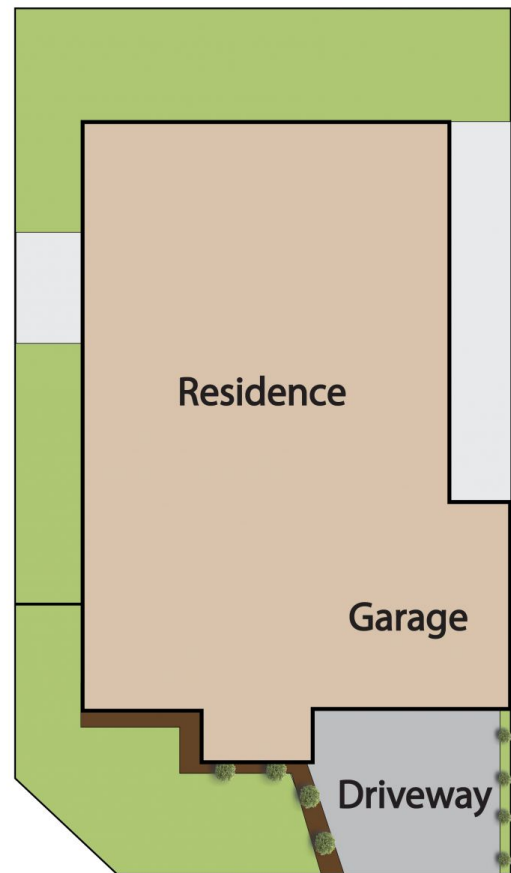
**Price** : \$ 735,000  
**Land Size** : 415 sqm  
**View** : <https://www.ypa.com.au/7947695>

The modern open plan living and dining area are complimented by a beautifully appointed kitchen featuring island with breakfast bar, quality appliances, tiled splash back, overhead cupboards, and a built-in pantry providing plenty of storage space. The superb master bedroom features a large walk-in robe, ensuite with vanity, shower, and toilet. Remaining three bedrooms are generous in size, built in robes and all are serviced by the stylish family bathroom complete with a bathtub, shower, vanity, and a separate toilet.

## Floor Plan



## Site Plan



**50 Aquatic Drive, Cranbourne West**

**ypa**

\* Dimensions are approximate and for illustrative purposes only