

11 Angeline Way Craigieburn VIC

3 2 2

Introducing the perfect home or addition to your investment portfolio, where space and location really matter! Positioned within walking distance to all that Craigieburn has to offer, providing the convenience of playgrounds, parklands, lake, schools, supermarkets, shops, cafes, chemist, doctors, sporting clubs, public transport options and more. A simple lifestyle choice, for instant return and long-term value.

Offering:

- Master bedroom with wardrobe, modern ensuite and balcony access with stunning park views
- Additional 2 great sized bedrooms with built in wardrobes
- Serviced by a modern central bathroom with bath
- Separate toilet W/C
- Kitchen with stone benches, stainless steel appliances including dishwasher and ample pantry space

Price : \$520,000-\$540,000

View : <https://www.ypa.com.au/7947601>

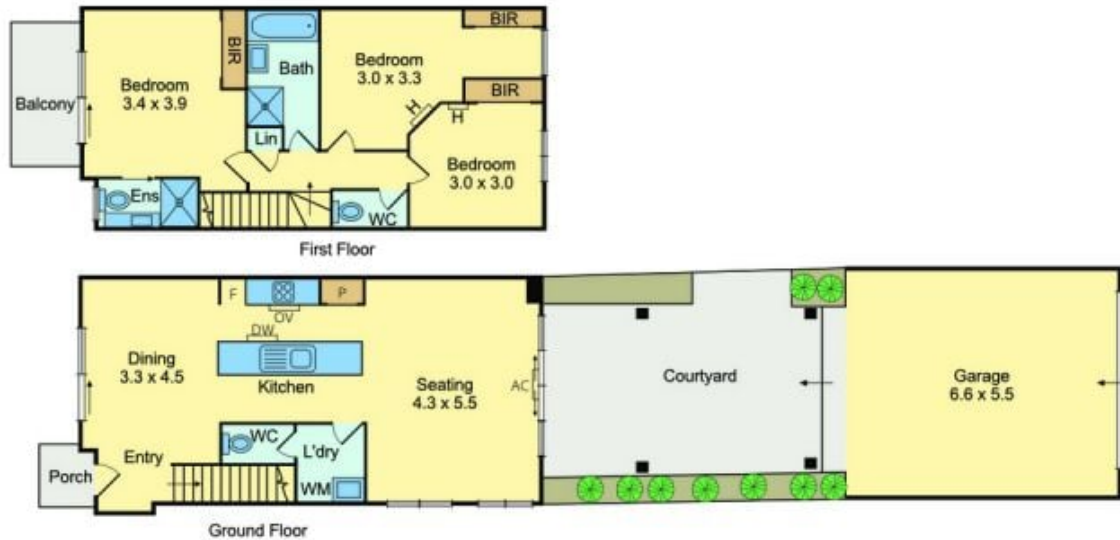


Melissa Abela
0405 264 150



Gianni D'Angelo
0466 185 825

11 Angeline Way, Craigieburn



All measurements are in metres. This plan is not to scale and provided as marketing material. All measurements are approximate and for illustrative purposes only. We make no guarantee of the accuracy of the plan, and you should independently determine the suitability of the property for your requirements.