



16 Terra Firma Circuit Clyde VIC

4 2 2

Step into the future of family living with this stunning, modern home located in the heart of Clyde. This five-bedroom, double-story home redefines contemporary living with its thoughtful design and luxurious features. Some highlights include a generous alfresco, a study/home office, dual living zones, a rumpus room/ third lounge, WIRs in all bedrooms and a dual purpose fifth bedroom/ leisure space.

Inside, you'll find light-filled spaces and impeccable attention to detail. The open-plan living area is a delight for the senses with neutral tones and clean lines highlighted by rays of natural light. It's the ultimate entertainment space with an ultra-comfortable lounge and beautiful dining space. Effortlessly connecting to a dual purpose fifth bedroom or additional leisure space providing flexible options to suit your lifestyle, and a generous alfresco and

Price : All Offers Welcome!
Land Size : 448 sqm
View : <https://www.ypa.com.au/7946589>

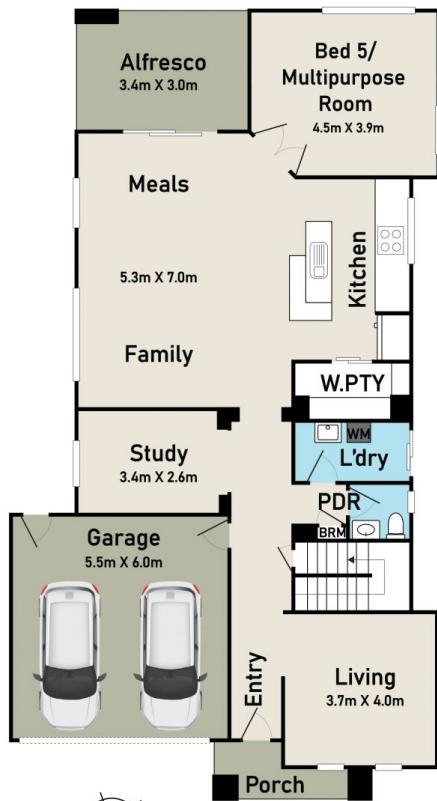


Kamaljeet Singh
0433 619 387

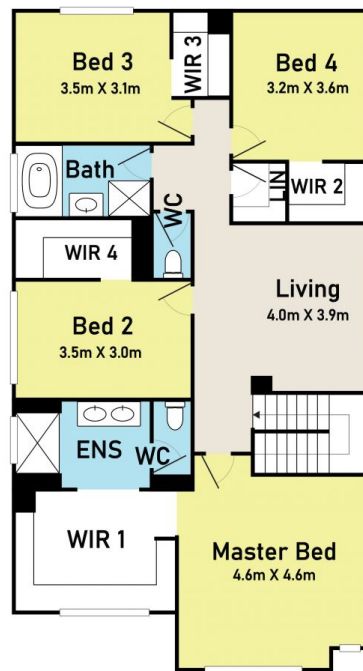


Hemant Dobriyal
0424 938 441

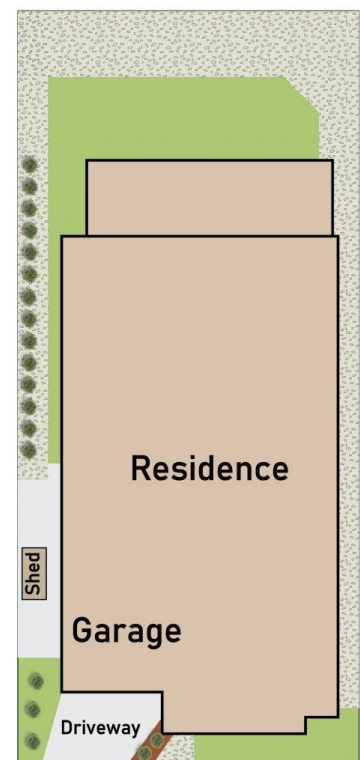
Ground Floor



First Floor



Site Plan



16 Terra Firma Circuit, Clyde

* Dimensions are approximate and for illustrative purposes only

ypa