

48 Sovereign Boulevard HARKNESS VIC

4 🏠 2 🚗 2 🚗

Homes of this magnitude don't come on the market often and it's not hard to see why. Situated in the beautiful estate of Sovereign Gardens in Harkness, this quality-built home has everything you could expect from the perfect family home. This family friendly home is perfectly complimented with a massive 817m² (approx.) land size and within close proximity to schools, freeway access, shopping and park facing, this residence truly stands in a lane of its own and offers something for the whole family.

Upon entrance, you are greeted by an impressive wide entry hallway, immediately you'll notice the high ceilings and abundance of space that add to the homes luxurious ambiance and shows the attention to detail throughout.

The first of many living zones is a large theatre room perfect for movie nights or kids toys, the three bedrooms

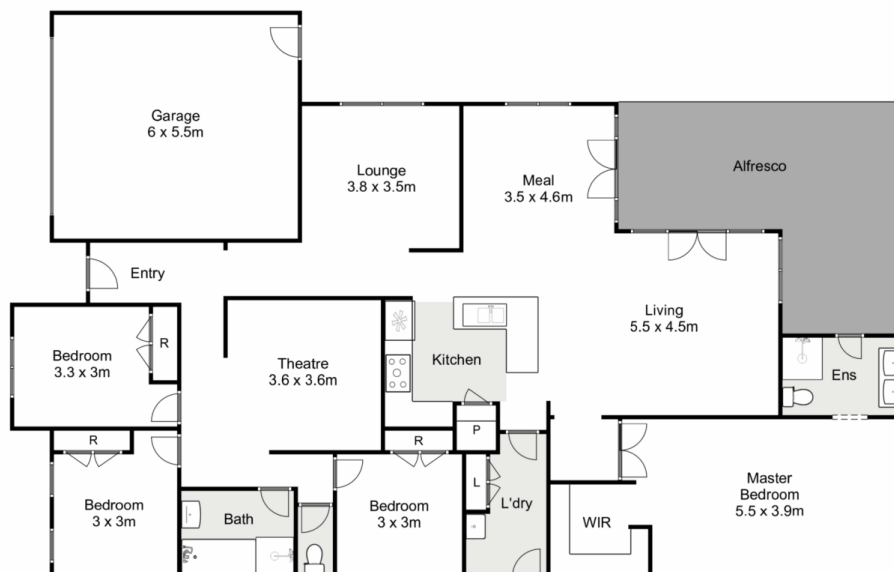
Price : \$729,000 - \$779,000
Land Size : 817 sqm
View : <https://www.ypa.com.au/7946032>



Shane Spiteri
0488 980 115



Kate McGlone
0401 853 244



48 Sovereign Boulevard, Harkness

Ypa

Whilst every attempt has been made to ensure the accuracy of the floor plan contained here, measurements of doors, windows, rooms and any other items are approximate and no responsibility is taken for any error, omission, or mis-statement. This plan is for illustrative purposes only and should be used as such by any prospective purchaser. The services, systems and appliances shown have not been tested and no guarantee as to their operability or efficiency can be given.

