



23 Clovelly Drive Craigieburn VIC

4 2

This Crown jewel located in prime Craigieburn location offers not only a home, but a quality of life. This is your opportunity to secure 2 properties for the price of one. This thoughtfully designed split level home offers flawless standards in quality, size and potential on a generous allotment of 658m2 approx.

1st level inclusions:

3 wonderful size bedrooms (all with BIR's), formal living, open plan lounge/dining room, quality built kitchen with stainless steel appliances, dishwasher and ample cupboard space. It doesn't end there- step out to a beautiful outdoor balcony to entertain guests all year round.

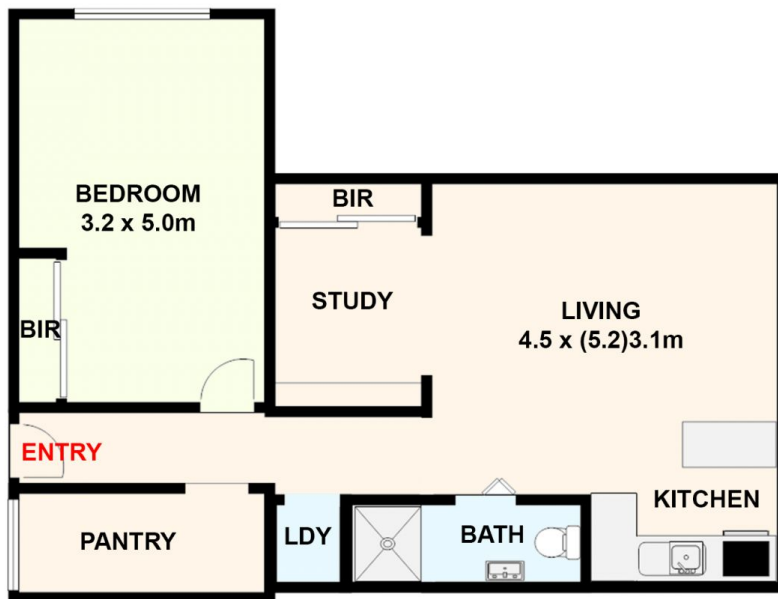
The ground level is fully self-contained with a kitchen leading to a living room, European laundry and bathroom with separate bedroom. Other qualities include ducted

Price : \$690,000- \$750,000
Land Size : 658 sqm
View : <https://www.ypa.com.au/7945354>

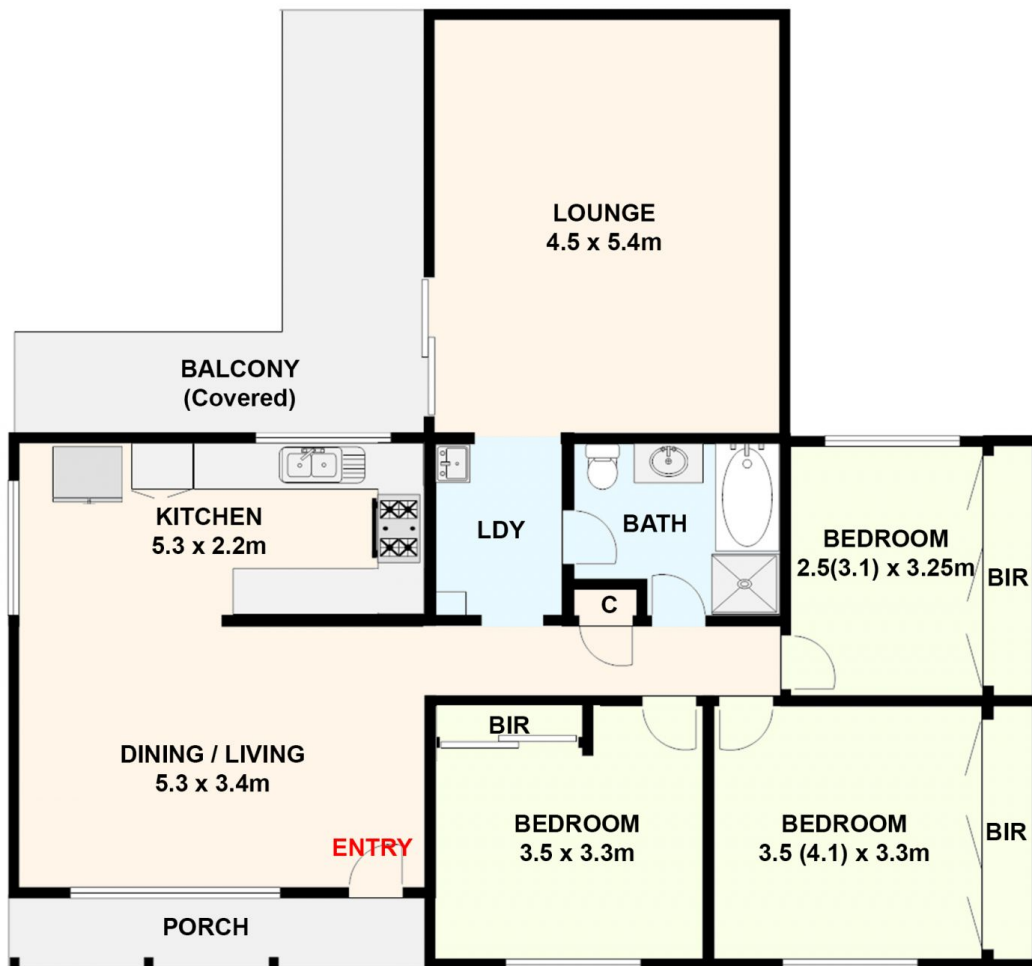


Ehab Chmaisse
0411 340 422

Khaled Khaled
0400 004 556



Lower Level



Ground Level

23 Clovelly Drive, Craigieburn.
All data and dimensions shown in this sketch are approximate.

