



2/118 Palmerston Street Melton VIC

2  1  1 

This beautiful unit is situated in the heart of Melton just moments away from all amenities, including public transport, schools, shopping, parklands, walking tracks, and easy freeway access. Whether you're looking to move in or invest this property is a wonderful opportunity to start or add to your property portfolio.

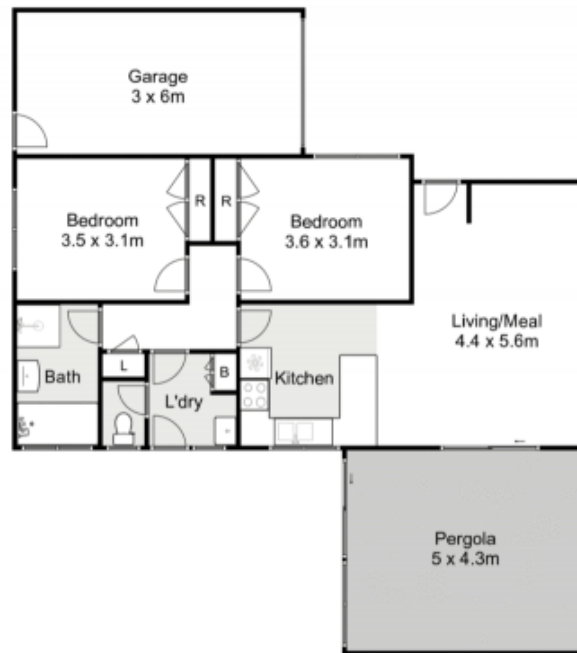
Comprising of two good sized bedrooms with built in robes, central bathroom and a large open living and meals area overlooked by a well equipped kitchen. Moving outside to the large backyard there secure fencing, undercover entertaining area, low maintenance gardens and a large garden shed.

Special features of this home include split system, gas heating, security doors, roller new flooring throughout, shutters, single car garage and much more. This property

View : <https://www.ypa.com.au/7945291>



Jodi Nash
0419 342 120



2/118 Palmerston Street, Melton



Whilst every attempt has been made to ensure the accuracy of the floor plan contained here, measurements of doors, windows, rooms and any other items are approximate and no responsibility is taken for any error, omission, or mis-statement. This plan is for illustrative purposes only and should be used as such by any prospective purchaser. The services, systems and appliances shown have not been tested and no guarantee as to their operability or efficiency can be given.

