

## 29 Spellman Avenue Sydenham VIC

4 🛏 2 🚿 1 🚗

### Exquisite Home in Prime Location

Discover luxury living at its finest in this stunning double-storey residence, nestled within the highly coveted enclave of Sydenham.

Experience spacious living with four generously sized bedrooms, including a master suite downstairs boasting a walk-in robe and ensuite, complemented by three larger-than-standard bedrooms upstairs, ensuring ample space for the entire family.

Indulge in moments of relaxation or family bonding in the cozy retreat upstairs, strategically placed to provide privacy and tranquillity.

Entertain with ease in the heart of the home, featuring two distinct living areas that cater to various activities and gatherings, seamlessly connected for effortless flow.

Prepare culinary delights in the modern U-shaped kitchen, equipped with ample cupboard space and overlooking the

**Price** : \$ 930,000

**Land Size** : 803 sqm

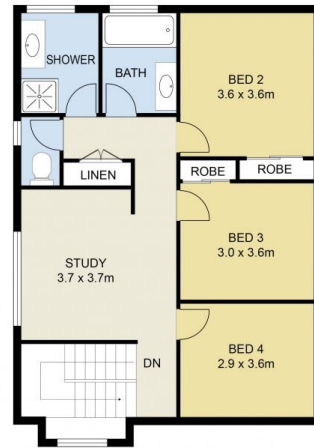
**View** : <https://www.ypa.com.au/7944759>



**Gavin Fouts**  
0401 178 636



**Peter Colella**  
0421 346 326



## 29 Spellman Avenue Sydenham



DISCLAIMER : ALL DIMENSIONS ARE AN APPROXIMATION ONLY AND NO GUARANTEE IS GIVEN WITH RESPECT TO ACCURACY.