



131 Princes Highway Werribee VIC

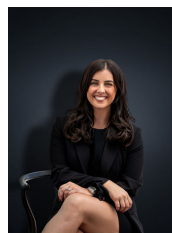
6 4 4

Located smack bang in the center of Werribee you are located within:

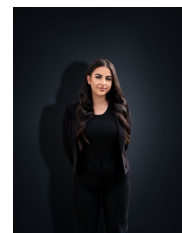
- ? Approx. 2km to Werribee CBD & Train Station
- ? Approx. 2.5km to Aqua Pulse
- ? Approx. 3km to Werribee Mercy Hospital
- ? Approx. 3.2km to Pacific Werribee Shopping Centre
- ? Approx. 4km to Hoppers Crossing Train Station
- ? Almost immediate access to the M1 freeway
- ? Close distance to reputable Primary & Secondary Schools

This home offers unrivalled potential for both a commercial and residential opportunity. On a huge corner allotment of approx. 860 sq m this incredible home has so much to offer, in original, but fantastic condition the home is spacious by design and can be utilised with some many

Price : \$750,000 - \$810,000
Land Size : 859 sqm
View : <https://www.ypa.com.au/7944008>



Kirsty Cunningham
0414 344 475



Stefanie Zahra
0406 871 722

131 Princes Highway, WERRIBEE



Whilst every attempt has been made to ensure the accuracy of the floor plan contained here, measurements of doors, windows, rooms and any other items are approximate and no responsibility is taken for any error, omission, or mis-statement. This plan is for illustrative purposes only and should be used as such by any prospective purchaser. The services, systems and appliances shown have not been tested and no guarantee as to their operability or efficiency can be given.