



8 Elizabeth Street MELTON SOUTH VIC

2 1 2

An exciting opportunity has come up for investors, first home buyers or developers looking to purchase a home in a fantastic pocket of Melton South that comes complete with approved plans and permits for a second dwelling (featuring three bedrooms, two bathrooms and single garage) at the rear of the property on a generous 593 m2 (approx.) allotment.

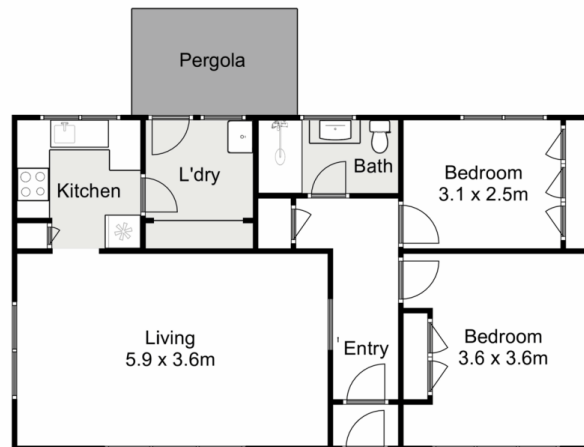
This property could not be better located being close to all major amenities, including Melton Train Station, all levels of schooling, childcare, parks, shops, bus stops, upcoming hospital and much more to come.

The home itself comprises of two great sized bedrooms, Space to relax in the main living area, main bathroom and a laundry.

Price : \$439,000 - \$469,000
Land Size : 592 sqm
View : <https://www.ypa.com.au/7941353>



Monty Tyagi
0435 896 907



8 Elizabeth Street, Melton South

YPA

Whilst every attempt has been made to ensure the accuracy of the floor plan contained here, measurements of doors, windows, rooms and any other items are approximate and no responsibility is taken for any error, omission, or mis-statement. This plan is for illustrative purposes only and should be used as such by any prospective purchaser. The services, systems and appliances shown have not been tested and no guarantee as to their operability or efficiency can be given.

