

1/6 Montana Drive Werribee VIC

3 2 1

Presented to perfection this unique property offers so much as an entry into the Werribee market. Surprising you with a spacious design there are so many advantages to this beautiful home. Located centrally within a short drive to Werribee CBD, Train Station with café's, shops and everything you could need. A short drive to freeway access and walking distance to Parks and reputable schools. Also equally as quick to Wyndham Vale Train Station and Manor Lakes Central. The home offers buyers;

- ? Three spacious bedrooms all with built in robes
- ? Two bathrooms
- ? Modern day living with open plan kitchen and living arrangement
- ? Formal dining room or second living zone
- ? Single car garage with internal access
- ? Low maintenance gardens both front and rear

Price : \$ 470,000
Land Size : 279 sqm
View : <https://www.ypa.com.au/7940927>

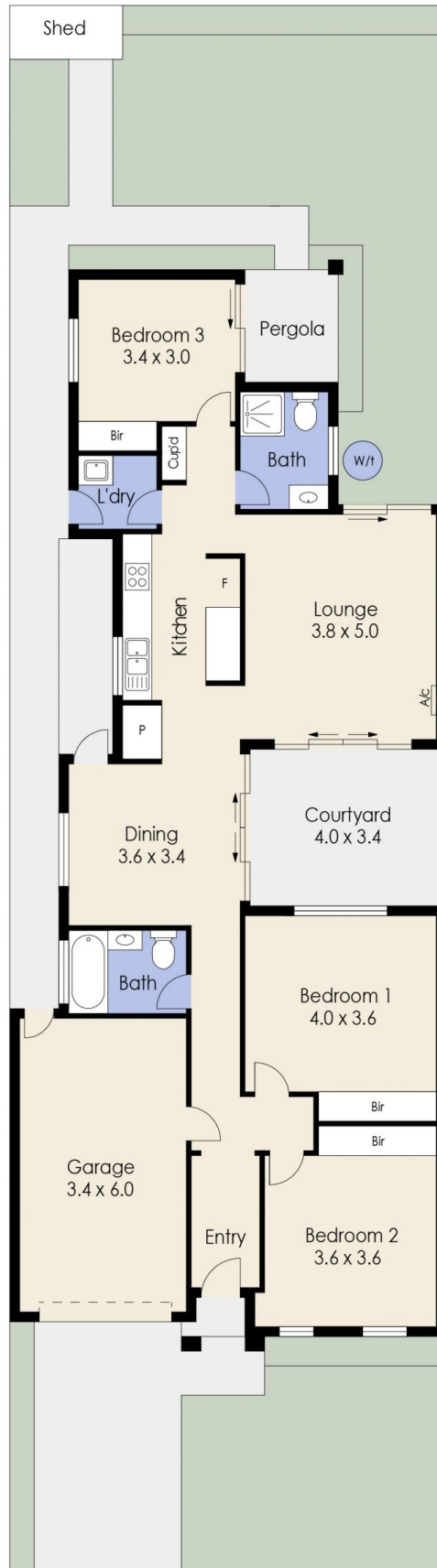


Mitch Smit
0450 913 513



James Christou
0450 733 302

1/6 Montana Drive, WERRIBEE



Whilst every attempt has been made to ensure the accuracy of the floor plan contained here, measurements of doors, windows, rooms and any other items are approximate and no responsibility is taken for any error, omission, or mis-statement. This plan is for illustrative purposes only and should be used as such by any prospective purchaser. The services, systems and appliances shown have not been tested and no guarantee as to their operability or efficiency can be given.