



1/48 Kennington Road Rosebud VIC

2 1 1

Located in a much sought after pocket of Rosebud - close to local schools, shopping, and recreational facilities - this lovely two bedroom home features a long list of quality features and must have conveniences.

Ideally suited to those looking to downsize, invest or enter the market as a first home buyer, this impressive property will be sure to impress with inclusions such as hardwood timber flooring, stone countertops, quality Bosch appliances, gas cooking, split system air conditioning, and a bathroom with an oversized shower and bathtub.

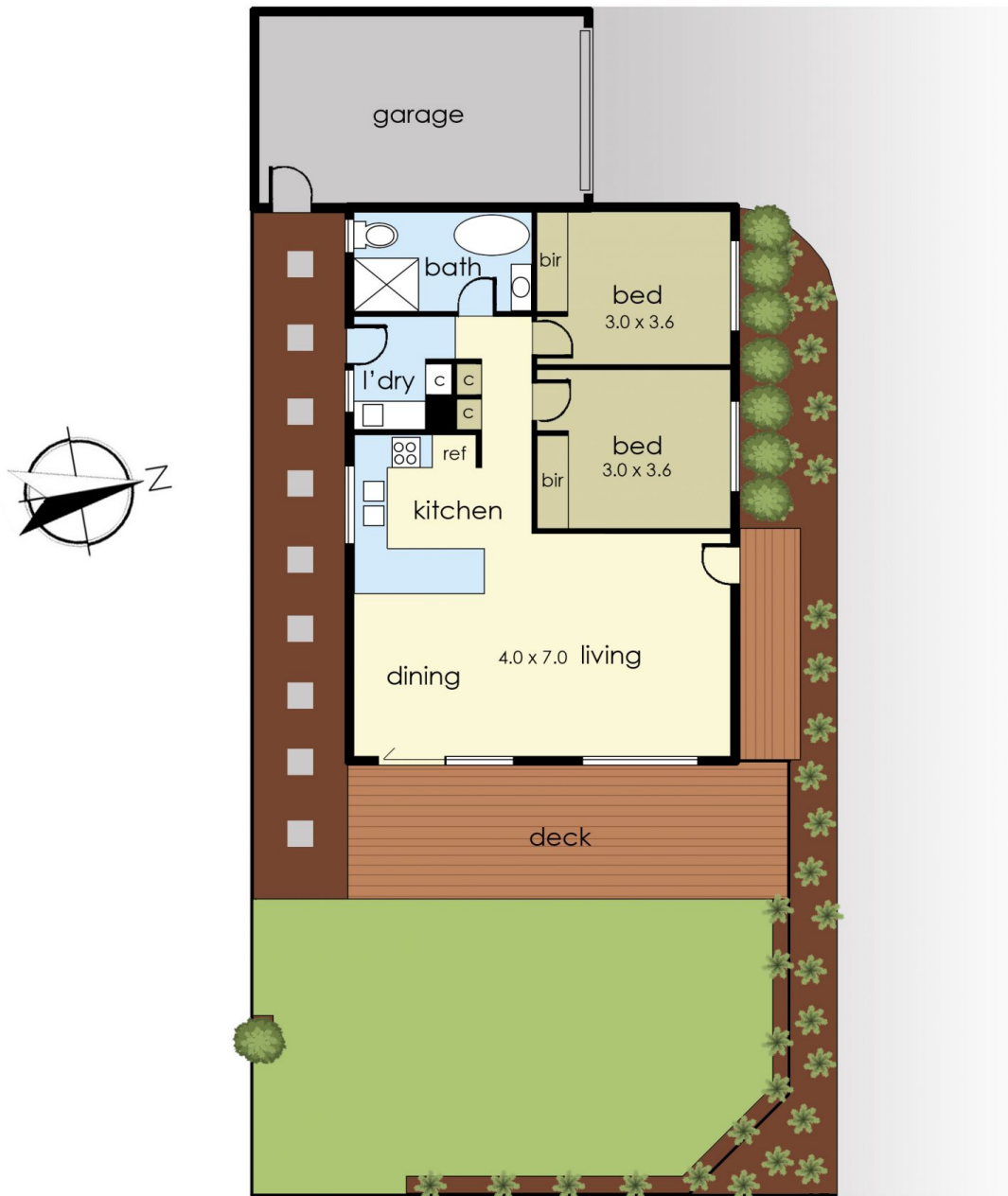
Additionally, the home offers a single lock up garage, low maintenance yard, and an outdoor deck with a sunny east facing aspect.

Super close to all the action, yet far enough away that you

Price : \$ 647,500
Land Size : 213 sqm
View : <https://www.ypa.com.au/7940370>



Jade Springer
0437 410 791



1/48 Kennington Road, Rosebud

This floorplan is for illustration purposes only and no warranty is given to its accuracy. Purchasers are advised to carry out their own investigations.