



16 Rumen Street Wyndham Vale VIC

5 2 2

Wyndham Vale is a thriving suburb known for its blend of convenience, education, and entertainment. Residents enjoy easy access to essential amenities, creating a seamless daily routine. Families benefit from nearby esteemed educational institutions like Ngarri Primary School, fostering a nurturing environment for children's development. Local shops, including an IGA, promote community engagement, enhancing the area's social fabric.

For leisure and shopping, the nearby Werribee Pacific shopping center offers a diverse range of options, further adding to the suburb's appeal as a recreational hub. Seamless transport connectivity ensures easy access to the wider city and beyond, making commuting or exploring surrounding areas effortless. With property prices steadily rising, Wyndham Vale presents promising investment opportunities for discerning investors.

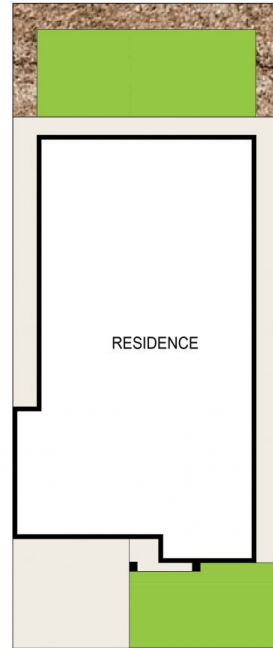
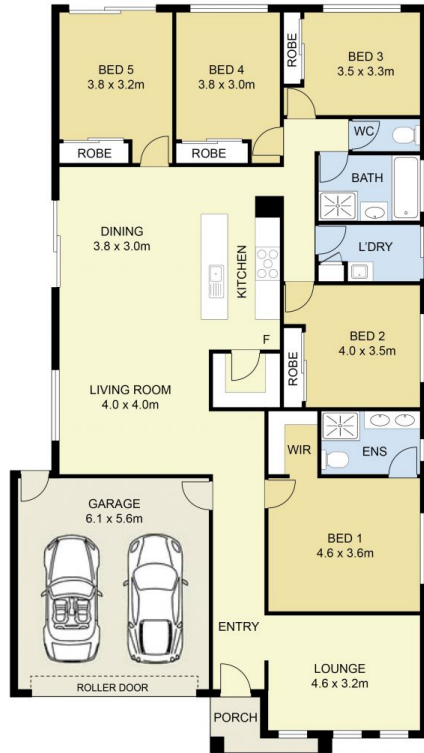
Price : PRIVATE SALE | \$650,000 - \$699,000
Land Size : 448 sqm
View : <https://www.ypa.com.au/7940171>



Stephen Azzopardi
 0402 012 554



Andrew Migliorisi
 0432 526 844



16 Rumen Street, Wyndham Vale

0 1 2 3 4 5
SCALE (METRES)



DISCLAIMER : ALL DIMENSIONS ARE AN APPROXIMATION ONLY AND NO GUARANTEE IS GIVEN WITH RESPECT TO ACCURACY.