



## 33 Wolverton Drive Gladstone Park VIC

4  2  1 

This magnificent home is straight out of the pages of Vogue Living! Fully transformed from top to bottom, this residence is a testament to clever design, an appreciation of unrivalled vision, unique with innovative detailing and décor, where everything has been perfectly completed to blend into the modern era of today? together with the exceptional location where popular Gladstone Park Secondary College is at your doorstep, alongside Gladstone Park Primary.

Captivating from the moment you walk in, an open-floorplan, flooded with natural light and enhanced by the stunning square set openings and the warmth of the engineered timber flooring.

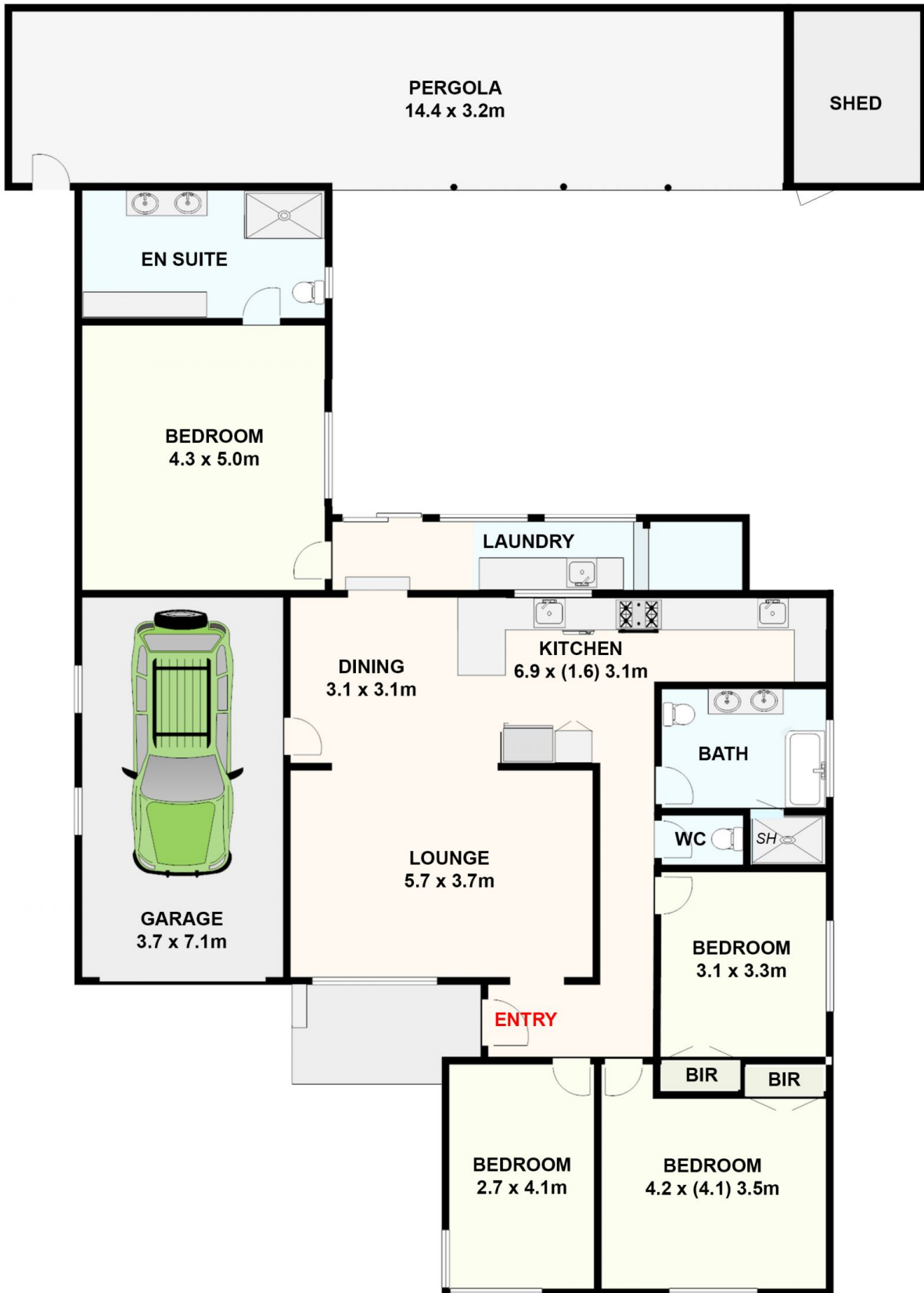
The ultimate residential lifestyle with 4 spacious bedrooms, three with built-in

**Price** : \$ 860,000

**View** : <https://www.ypa.com.au/7937190>



**Michael Sassine**  
0421 023 243



**33 Wolverton Drive, Gladstone Park.**  
*All data and dimensions shown in this sketch are approximate.*

