



## 20 Acumin Street Brookfield VIC

4 2 1

Take advantage of this stunning home, located directly across the road from a massive park/playground, in the heart of Brookfield. This property is close by to all amenities such as schools of all levels, public transport, upcoming schools and shopping centre, and freeway access.

This low maintenance open plan home has everything you could possibly need. As you walk in you are greeted by the spacious formal living area, providing that additional entertaining space for the family.

Continuing through you are met by a generously sized master bedroom, featuring a walk-in and bright ensuite. The remaining three bedrooms are all great size and feature built in robes and are serviced by a modern & convenient central bathroom.

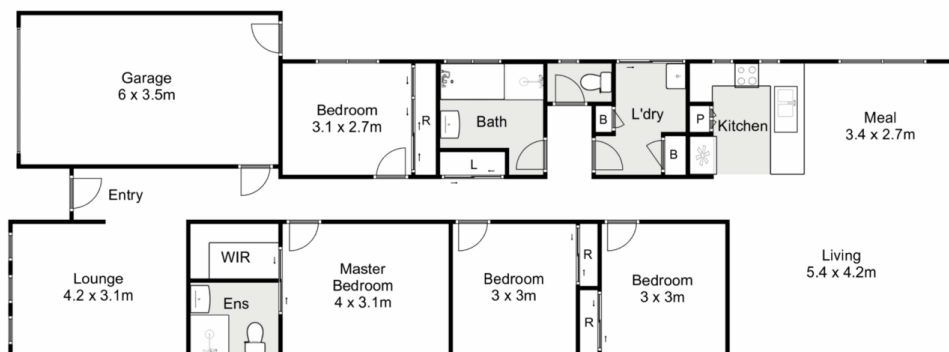
**Land Size** : 320 sqm  
**View** : <https://www.ypa.com.au/7933792>



**Ryan Anders**  
0434 900 300



**Shane Spiteri**  
0488 980 115



## 20 Acumin Street, Brookfield

Ypa

Whilst every attempt has been made to ensure the accuracy of the floor plan contained here, measurements of doors, windows, rooms and any other items are approximate and no responsibility is taken for any error, omission, or mis-statement. This plan is for illustrative purposes only and should be used as such by any prospective purchaser. The services, systems and appliances shown have not been tested and no guarantee as to their operability or efficiency can be given.

