



13A Bronte Court Wyndham Vale VIC

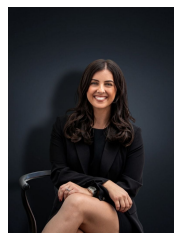
3 2 2

Located amongst stunning walking tracks and parklands in a beautiful court location this home is sure to be popular! Offering a spacious design, you will benefit from location and a low maintenance lifestyle opportunity - what more could ask for?

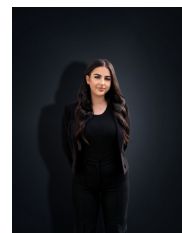
Price : \$ 555,000
Land Size : 336 sqm
View : <https://www.ypa.com.au/7933481>

Positioned within a short drive to local shops & restaurants, Wyndham Vale square Shopping Centre and only a five-minute drive to the Wyndham Vale Train station! Offering:

- ? Three spacious bedrooms
- ? Formal lounge upon entry (oversized and can be also utilised as a dining / study space)
- ? Kitchen / Meals area
- ? Quality stainless steel appliances and dishwasher
- ? Master bedroom with walk in robe and ensuite



Kirsty Cunningham
0414 344 475



Stefanie Zahra
0406 871 722



13A Bronte Court, Wyndham Vale

Whilst every attempt has been made to ensure the accuracy of the plan contained, measurements of doors, windows, rooms and any other items are approximate and no responsibility taken for any error, omission, or mis-statement. This plan is for illustrative purposes only and should be used as such by any prospective purchaser. The services, systems and appliances.