

77 Princes Highway Werribee VIC

3 1 4

FORTHCOMING AUCTION!

On offer is this rare opportunity to purchase a three-bedroom home on a massive allotment of land 580m² approximately. This property is within close proximity to Werribee Mercy Hospital, St Vincent's Private Hospital and only a short stroll to Werribee CBD, Werribee Railway Station and of course easy access straight onto the freeway to Melbourne CBD. This prime location is highly sought after and ideal for a Medical Centre/Specialist Consulting Rooms, Shop front or an excellent location for a townhouse or unit development, all subject to Council approval. Offering the next lucky owner.

- ? Three spacious bedrooms with built in robes
- ? Central bathroom with access from the main bedroom
- ? Separate toilet

Price : \$ 605,000
Land Size : 590 sqm
View : <https://www.ypa.com.au/7933014>



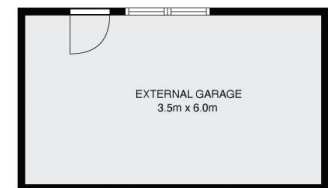
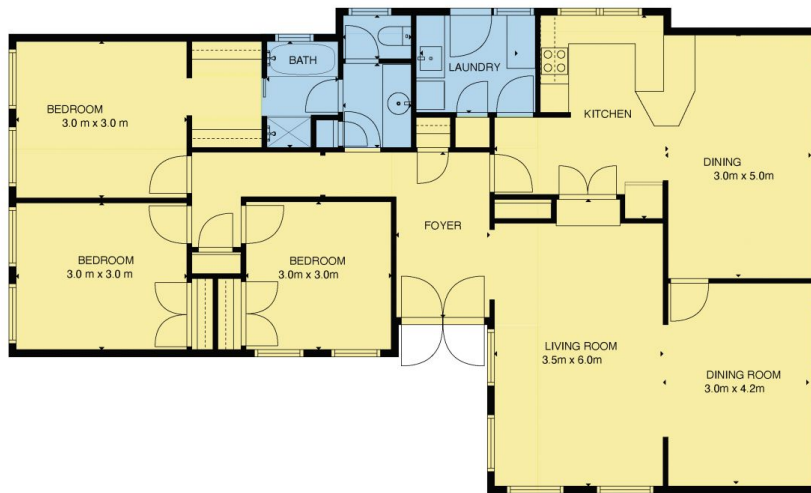
Mitch Smit
0450 913 513



Kiarah Bagnato
0449 941 895



ypa



77 Princes Highway, Werribee

Whilst every attempt has been made to ensure the accuracy of the plan contained, measurements of doors, windows, rooms and any other items are approximate and no responsibility taken for any error, omission, or mis-statement. This plan is for illustrative purposes only and should be used as such by any prospective purchaser. The services, systems and appliances.