



## 9 Grimwade Place Melton West VIC

3 2 2

Nestled in a tranquil court in the heart of Melton West, this remarkable family home offers a rare blend of space, comfort, and convenience. Situated on a sprawling 843m<sup>2</sup> (approx.) allotment, this property presents a unique opportunity to secure a well-appointed residence in a sought-after location, close to a range of amenities.

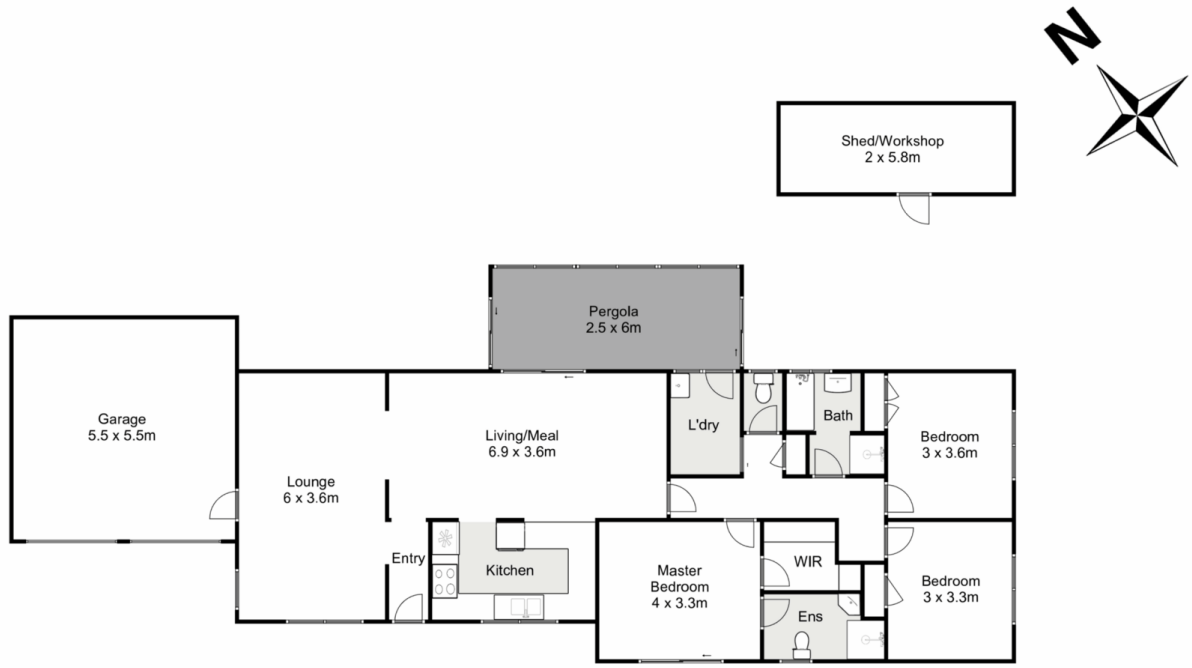
Boasting a solid construction and meticulous upkeep, the master ensuite is a true retreat, complete with a walk-in robe and an ensuite, while the remaining bedrooms are serviced by a central bathroom and offer ample storage and natural light.

The living spaces are both spacious and inviting, with a large living area at the front of the home that seamlessly flows into the well-equipped kitchen that boasts a dish washer, bench space and an amazing amount of storage.

**Price** : \$ 549,000  
**Land Size** : 847 sqm  
**View** : <https://www.ypa.com.au/7932498>



**Monty Tyagi**  
 0435 896 907



## 9 Grimwade Place, Melton West

YPA

Whilst every attempt has been made to ensure the accuracy of the floor plan contained here, measurements of doors, windows, rooms and any other items are approximate and no responsibility is taken for any error, omission, or mis-statement. This plan is for illustrative purposes only and should be used as such by any prospective purchaser. The services, systems and appliances shown have not been tested and no guarantee as to their operability or efficiency can be given.

