

6 Barron Way WEIR VIEWS VIC

3 2 3

Properties in this part of Waterford Estate don't come on the market too often, and it's not hard to see why. Highly sought out, well maintained family friendly neighbourhood, this is by far one of the most desirable pockets of Weir Views. This beautiful area provides easy access to schools, shops, parks, Opalia Shopping Centre, Melton South Train Station, The Weir, parks, freeway access and much more future development.

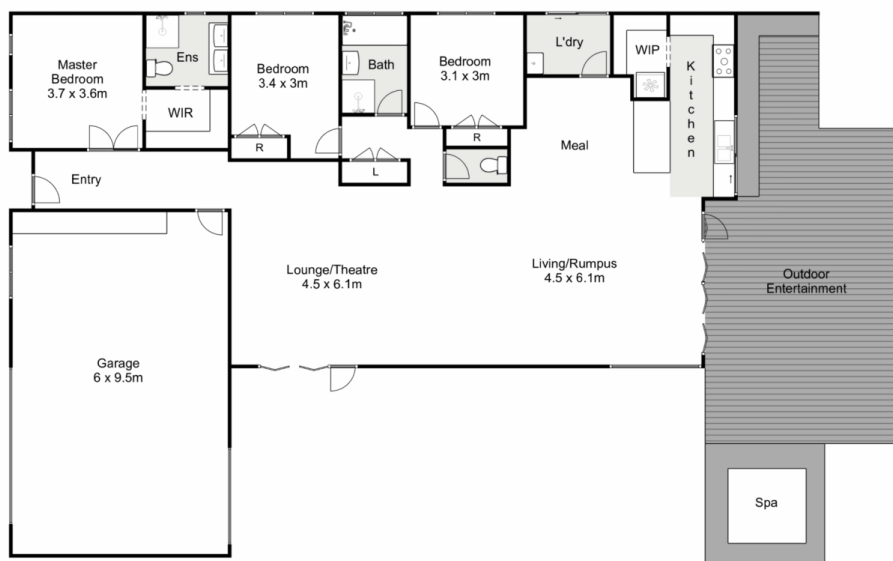
This truly high quality, Porter Davis home is an amazing opportunity for anybody looking to get into this location or upgrade their family home to something that is exceptional. This one's not to be missed.

Upon entry you are greeted with a wide open hallway with beautiful floorboards and a homely ambiance that immediately sets the tone for what you can expect from the

Price : \$ 640,000
Land Size : 576 sqm
View : <https://www.ypa.com.au/7932000>



Junior MuBashar
 0450 644 606



6 Barron Way, Weir Views

ypa

Whilst every attempt has been made to ensure the accuracy of the floor plan contained here, measurements of doors, windows, rooms and any other items are approximate and no responsibility is taken for any error, omission, or mis-statement. This plan is for illustrative purposes only and should be used as such by any prospective purchaser. The services, systems and appliances shown have not been tested and no guarantee as to their operability or efficiency can be given.

