



29 Kingfisher Avenue Capel Sound VIC

3  1  1 

Located just minutes to the pristine sandy shores of the Capel Sound Foreshore and Bay Trail, this immaculate, single level brick home offers the ideal opportunity to secure your first home, beachside investment, or holiday home by the bay.

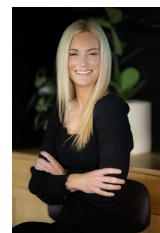
Conveniently positioned halfway between Rye Village and Rosebud Plaza, from this central location you are also just moments from an array of exciting local tourist attractions and recreational facilities including golf courses, day spas, restaurants, and cafes. For those who prefer to immerse themselves in the great outdoors, there are also many coastal adventure activities close by including, hiking trails, nature walks, and surf breaks.

Offering the additional option for a lucrative holiday or permanent long term investment, this lovely property

Price : \$ 788,000
Land Size : 813 sqm
View : <https://www.ypa.com.au/7928708>



Tony Talarico
0420 778 401



Katrina Talarico
0420 778 404



29 Kingfisher Avenue, Capel Sound

This floorplan is for illustration purposes only and no warranty is given to its accuracy. Purchasers are advised to carry out their own investigations.