



3 Lister Crescent Sunbury VIC

4  2  2 

Nestled in the highly sought after Killara Estate, this beautiful family home sits on 641m² approximately in a quiet court location with so much to love!

Entering the front door, you will be greeted with a large lounge area with a built in fireplace and a brick feature wall. Offering an open plan kitchen and dining space, complete with stone benchtops, stainless steel dishwasher, gas cooktop and oven.

The bedrooms feature mirrored built-in wardrobes, while the master bedroom boasts an ensuite bathroom and a spacious walk-in wardrobe.

Additional property features include roller shutters, roller blinds, double garage/shed on remote, additional off-street parking, and side gates with access to accommodate

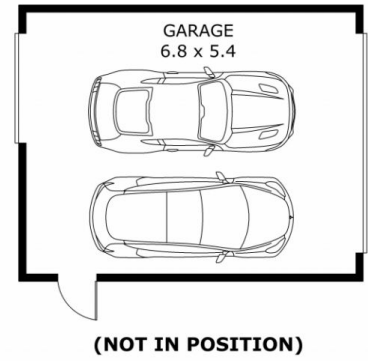
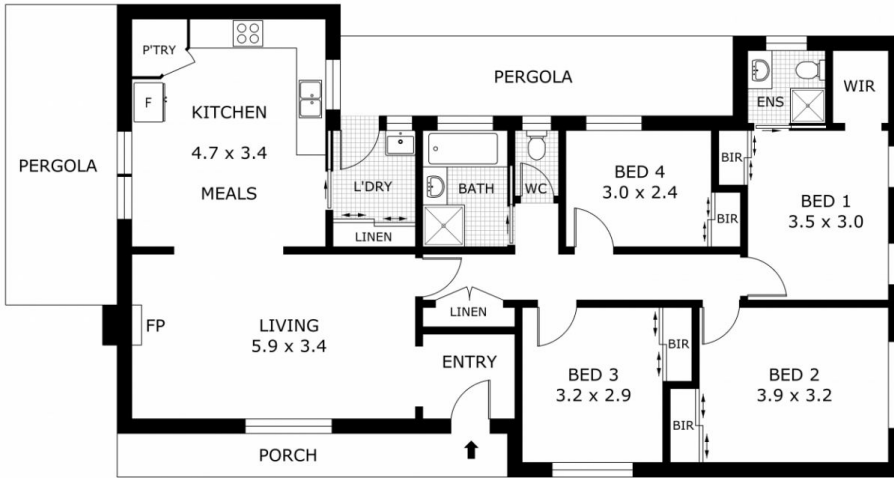
Price : \$ 600,000

Land Size : 645 sqm

View : <https://www.ypa.com.au/7928531>



Lisa Totaro
0410 144 215



Disclaimer: All images, views and diagrams are indicative only. Dimensions, areas and landscape are indicative and subject to change without notice. Purchasers should check the plans and specifications included in the terms of the contract of sale carefully prior to signing the contract.